

THE BYRON II



TRANSITIONAL



CRAFTSMAN



TRADITIONAL

FEATURES:

4 Bedrooms

2.5 Bathrooms

2,238 - 2,414 sq ft

Efficient open concept

SALES COUNSELOR: **DIANA JORDAN**

(757) 284-1845

diana@napolitanohomes.com

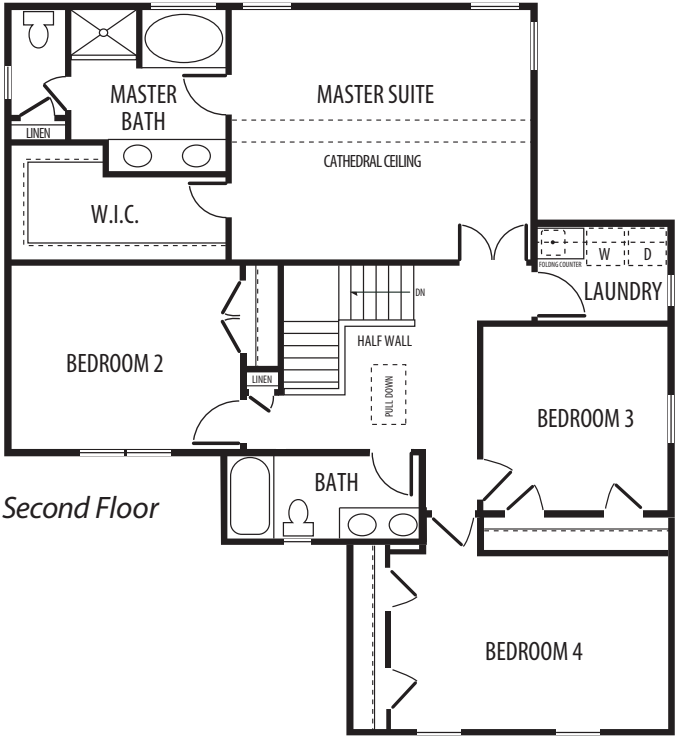
www.napolitanohomes.com/suffolk/kings-fork-village

All prices, plans, elevations, features, specifications, and materials are subject to change without notice or obligation. Illustrations and floor plans are artist's renderings, not architectural blueprints. Options and extra-cost upgrades such as stone and brick may be shown and may vary by neighborhood. Please consult with your sales counselor prior to writing an offer.



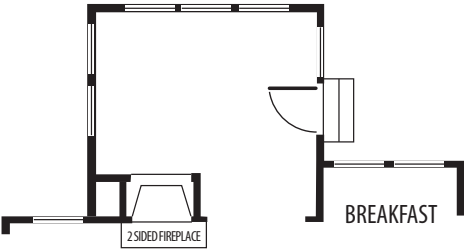
THE BYRON II

Opt. Master Bath with ceramic shower and glass partition

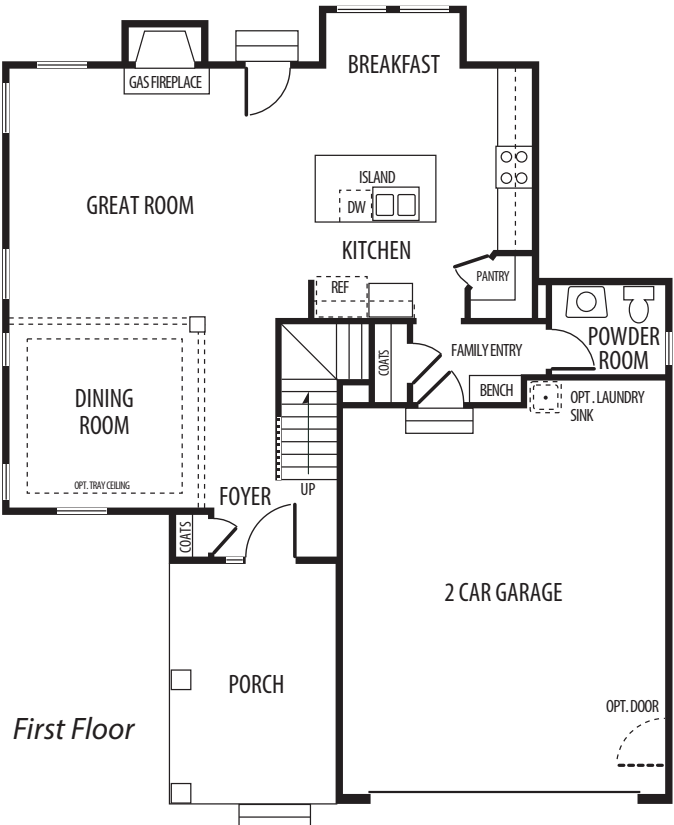
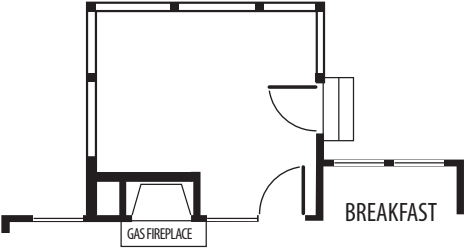


Second Floor

OPTIONAL SUNROOM



OPTIONAL SCREENED PORCH



First Floor

*All floorplans based on Traditional Elevation