

# THE MONTEREY



TRADITIONAL



CRAFTSMAN



TRANSITIONAL

## FEATURES:

- 3 - 5 Bedrooms
- 2.5 - 4 Bathrooms
- 2,220 - 2,718 sq ft
- First Floor Bed/Study

## SALES COUNSELOR: **DIANA JORDAN**

(757) 284-1845

[diana@napolitanohomes.com](mailto:diana@napolitanohomes.com)

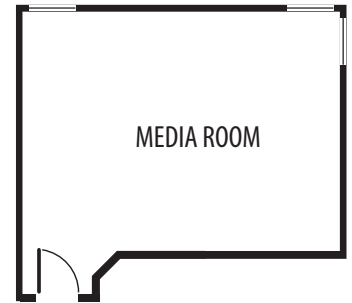
[www.napolitanohomes.com/suffolk/kings-fork-village](http://www.napolitanohomes.com/suffolk/kings-fork-village)

All prices, plans, elevations, features, specifications, and materials are subject to change without notice or obligation. Illustrations and floor plans are artist's renderings, not architectural blueprints. Options and extra-cost upgrades such as stone and brick may be shown and may vary by neighborhood. Please consult with your sales counselor prior to writing an offer.

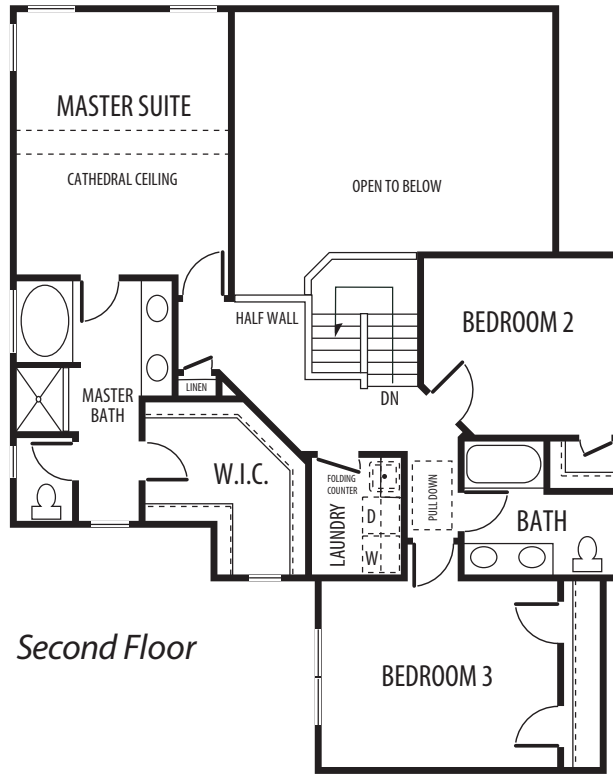
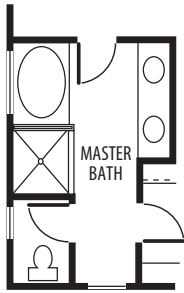


# THE MONTEREY

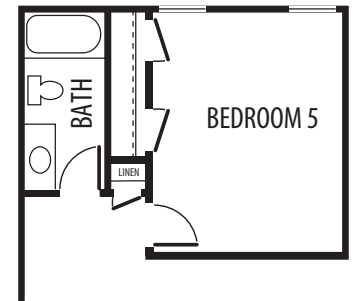
Media Room Option



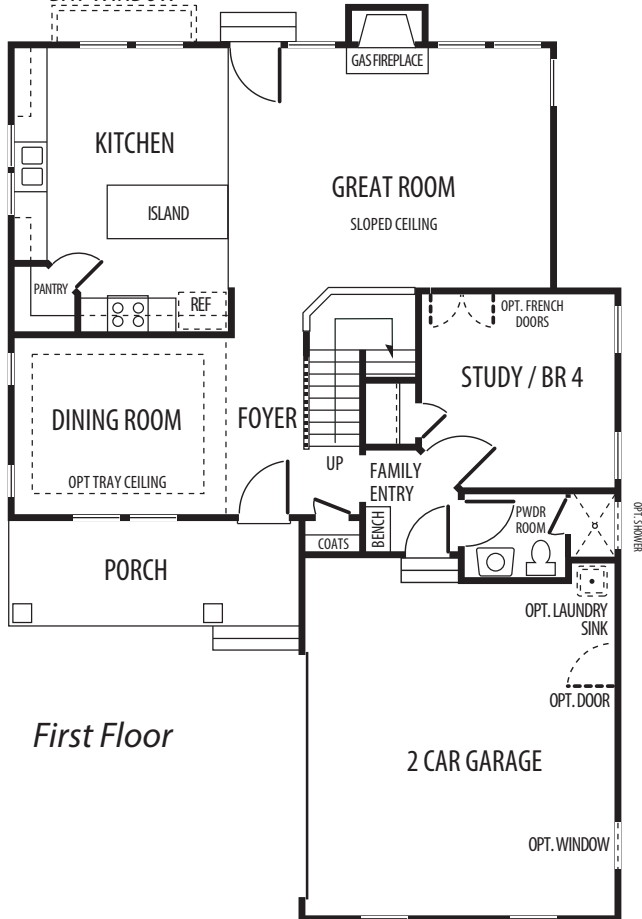
Opt. Master Bath with ceramic shower and glass partition



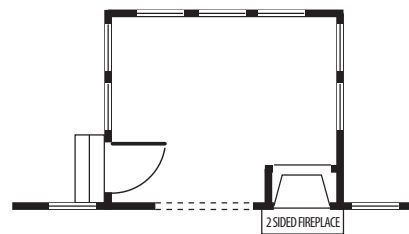
Bedroom 5 Option



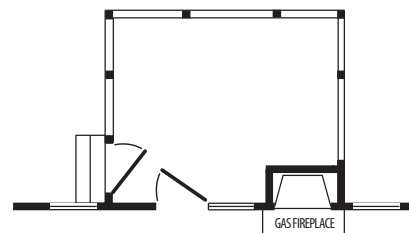
OPTIONAL BAY WINDOW



Sunroom Option



Screen Porch Option



\*All floorplans based on Traditional Elevation