

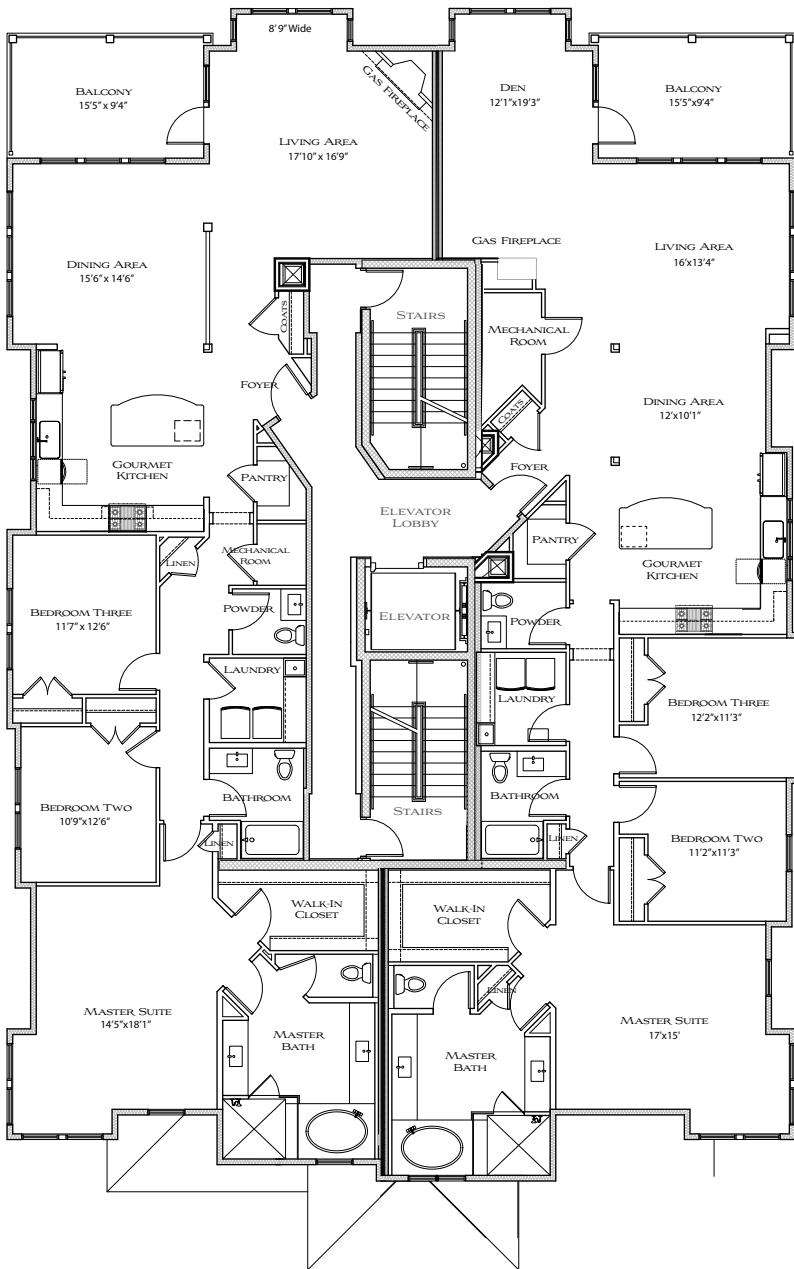
THE Floor Plans

POINT CHESAPEAKE

ON THE BAY

a condominium community

Building One Homes Priced From the Mid \$800s
Buildings Two and Three Homes Priced from the Mid \$900s
3 Bedrooms 2.5 Bath Luxury Homes



AURORA

LIVING AREA ~ 2,340 SQ.FT.

Storage ~ 20+ sq. ft.

Garage ~ 400+ sq. ft.

Balcony ~ 150 sq. ft.

TOTAL ~ 2,910+ SQ.FT.*

BEACON

LIVING AREA ~ 2,405 SQ.FT.

Storage ~ 20+ sq. ft.

Garage ~ 400+ sq. ft.

Balcony ~ 150 sq. ft.

TOTAL ~ 2,975+ SQ.FT.*

Named for light, these modern beach home designs afford you a front row seat to the 'show', the big, beautiful Chesapeake Bay. Living and entertaining spaces are front and center with banks of windows to bring in the sunlight and bay view.

Linda Bray
Jennifer Dawn

Office: (757) 837-4156
Fax: (757) 837-4460
PointChesapeake@BHHSTowne.com
www.PointChesapeakeOnTheBay.com



BERKSHIRE HATHAWAY
HomeServices
Towne Realty

LUXURY
COLLECTION

1101 Laskin Road | Virginia Beach, VA 23451 | (757) 481-8400



Exclusive Agent Representing the Seller. All information is believed to be accurate but is not warranted and is solely a guide to prospective purchasers who should satisfy themselves by inspection or otherwise as to the correctness of this information. © 2019 BHH Affiliates, LLC. An independently owned and operated franchisee of BHH Affiliates, LLC. Berkshire Hathaway HomeServices and the Berkshire Hathaway HomeServices symbol are registered service marks of HomeServices of America, Inc. Equal Housing Opportunity. Berkshire Hathaway HomeServices Towne Realty is an affiliate of TowneBank.

