

THE PALERMO



CRAFTSMAN



TRADITIONAL



FARMHOUSE

FEATURES:

3 - 5 Bedrooms

2.5 - 3 Bathrooms

2,438 - 2,694 sq ft

Open Concept, Media Room, Flex Room

SALES COUNSELOR: **KELLY MORAN**

(757) 240-8680

wbr@napolitanohomes.com

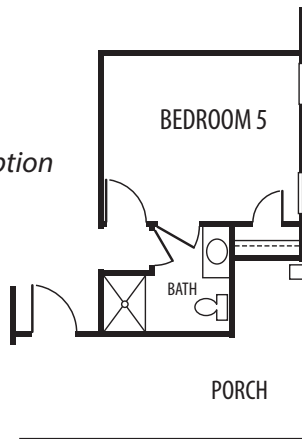
www.napolitanohomes.com/western-branch-reserve

© Napolitano Homes, All Rights Reserved. All prices, plans, elevations, features, specifications, and materials are subject to change without notice or obligation. Illustrations and floor plans are artist's renderings, not architectural blueprints. Options and extra-cost upgrades such as stone and brick may be shown and may vary by neighborhood. Please consult with your sales counselor prior to writing an offer.

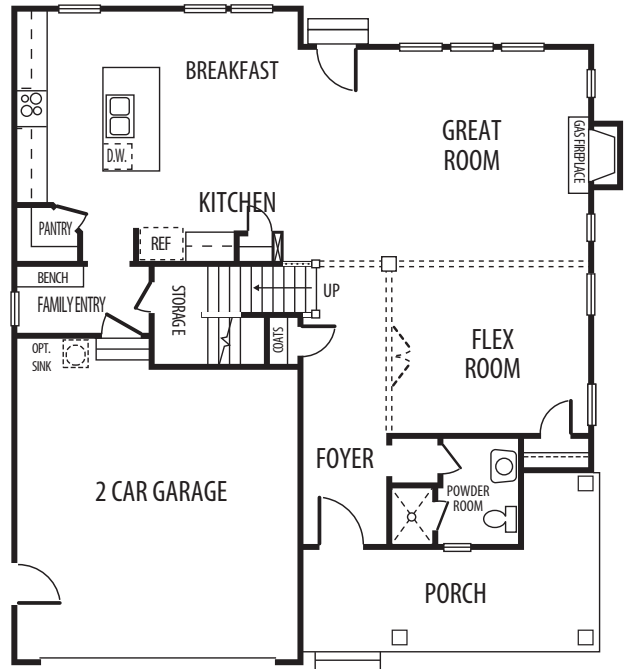
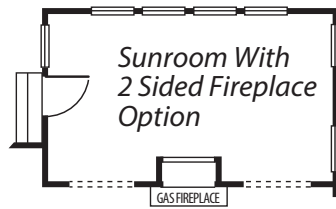
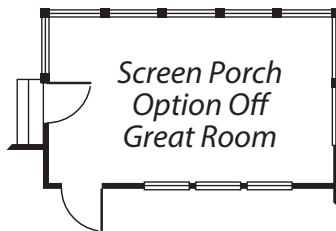


Palermo

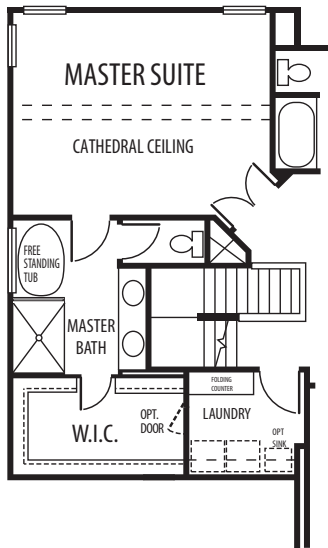
First Floor
Bedroom 5 Option



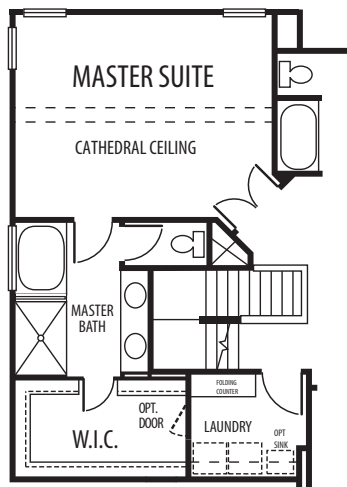
Optional Fireplace Location



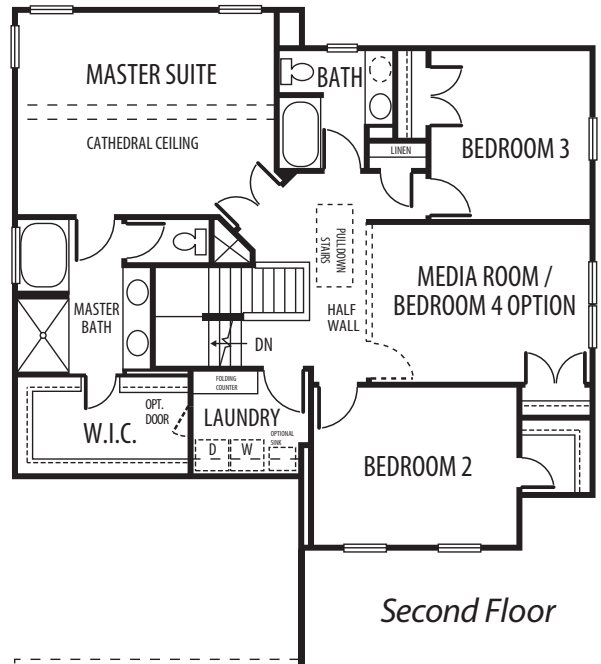
First Floor



Master Bath
Option 2 w/
Free Standing Tub



Master Bath
Option 1 w/
Ceramic Tile Shower
and Glass Partition



Second Floor

