

THE RAVELLO



CRAFTSMAN



TRADITIONAL



FARMHOUSE

FEATURES:

3 - 4 Bedrooms
2.5 Bathrooms
2,100 - 2,666 sq ft
Modern Floor Plan,
Private Study

SALES COUNSELOR: **KELLY MORAN**

(757) 240-8680

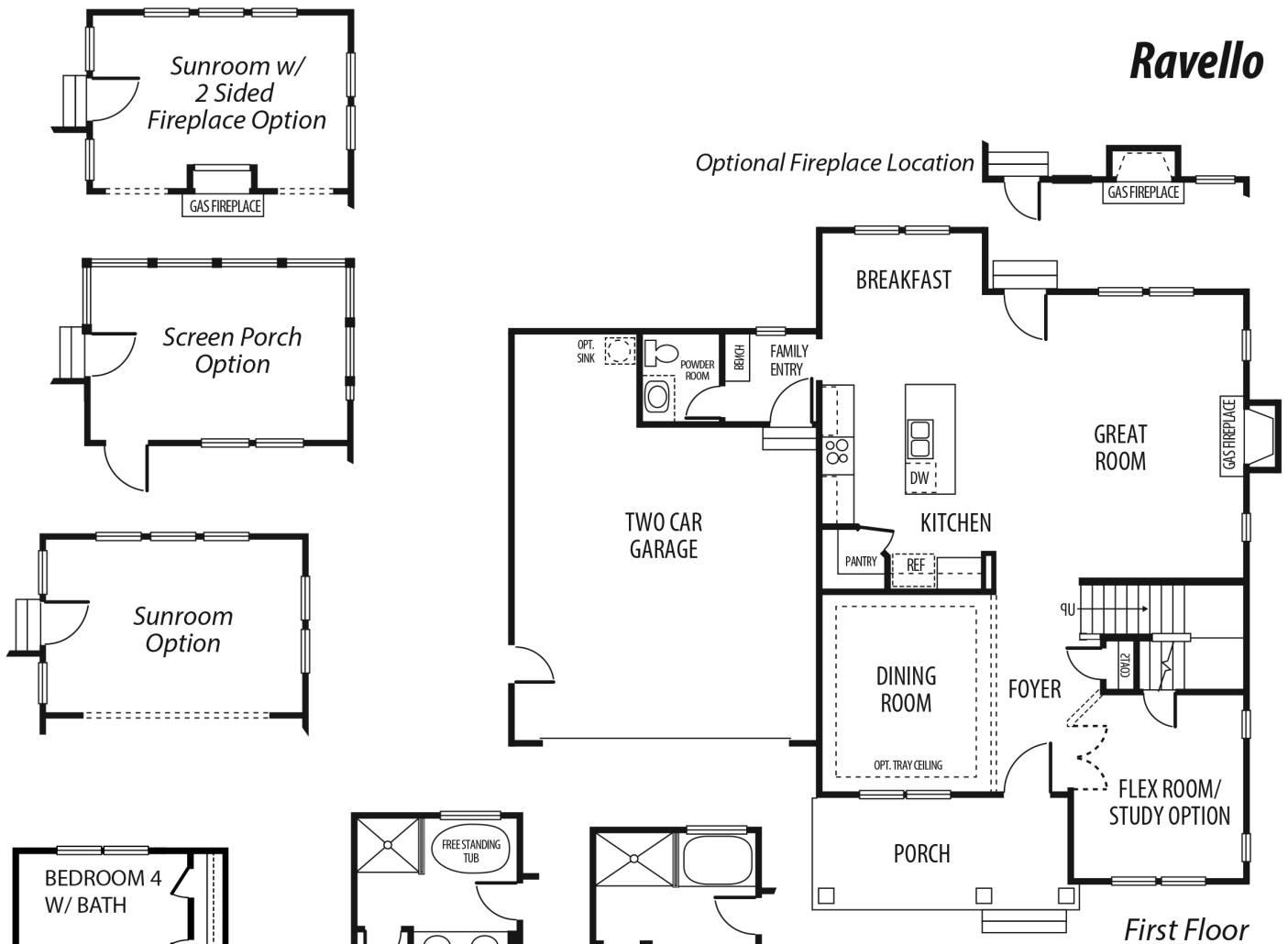
wbr@napolitanohomes.com

www.napolitanohomes.com/western-branch-reserve

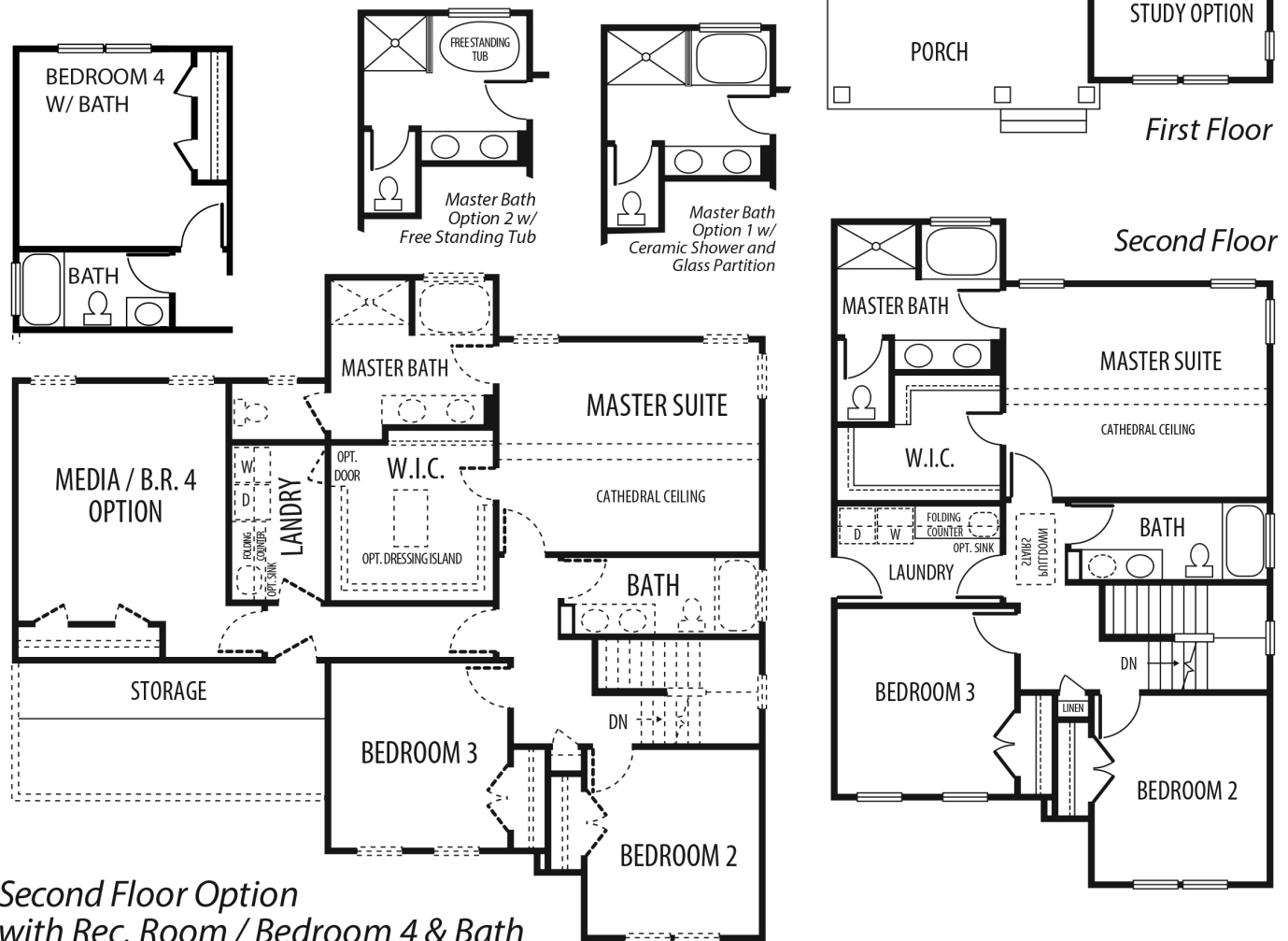
© Napolitano Homes, All Rights Reserved. All prices, plans, elevations, features, specifications, and materials are subject to change without notice or obligation. Illustrations and floor plans are artist's renderings, not architectural blueprints. Options and extra-cost upgrades such as stone and brick may be shown and may vary by neighborhood. Please consult with your sales counselor prior to writing an offer.



Ravello



First Floor



Second Floor

Second Floor Option with Rec. Room / Bedroom 4 & Bath



*All floorplans based on Traditional Elevation