

# THE CALABRIA



CRAFTSMAN



TRADITIONAL



FARMHOUSE

## FEATURES:

3 - 5 Bedrooms

2.5 - 3 Bathrooms

2,312 - 2,864 sq ft

Efficient Open Concept,  
1st Floor Master Suite

**SALES COUNSELOR: TARA STRAUER**

(757) 474-0888

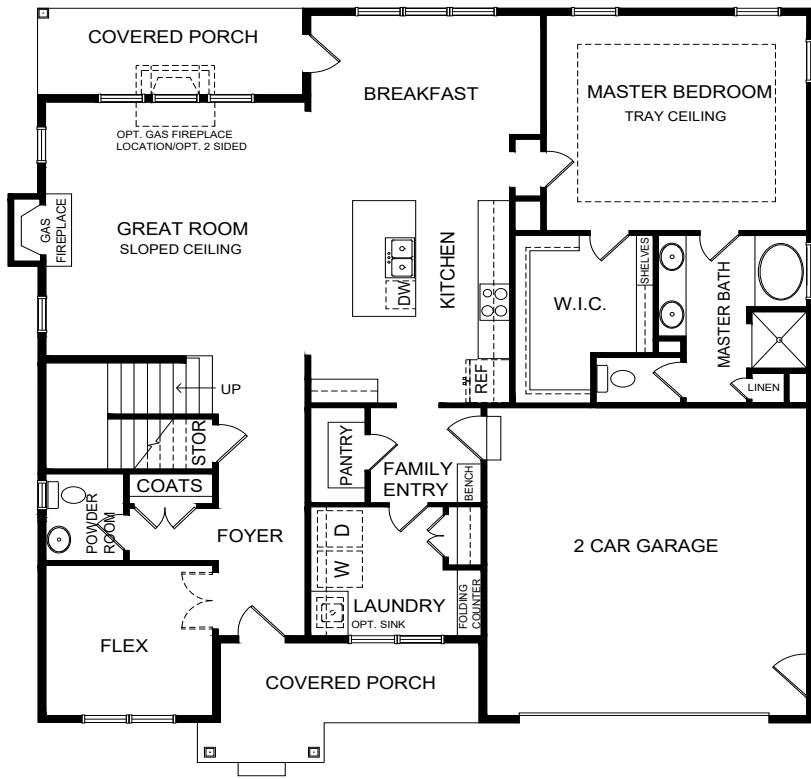
[wentworth@napolitanohomes.com](mailto:wentworth@napolitanohomes.com)

[www.napolitanohomes.com/wentworth](http://www.napolitanohomes.com/wentworth)

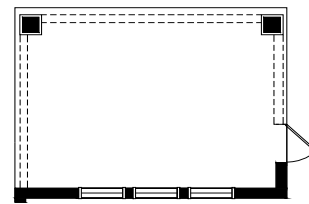
© Napolitano Homes, All Rights Reserved. All prices, plans, elevations, features, specifications, and materials are subject to change without notice or obligation. Illustrations and floor plans are artist's renderings, not architectural blueprints. Options and extra-cost upgrades such as stone and brick may be shown and may vary by neighborhood. Please consult with your sales counselor prior to writing an offer.



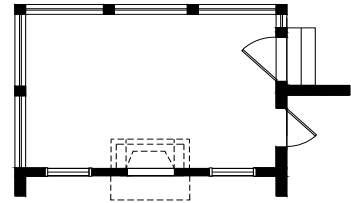
# THE CALABRIA



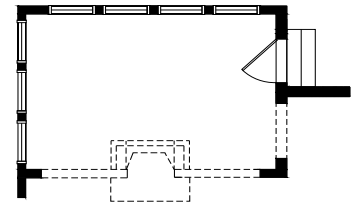
FIRST FLOOR PLAN



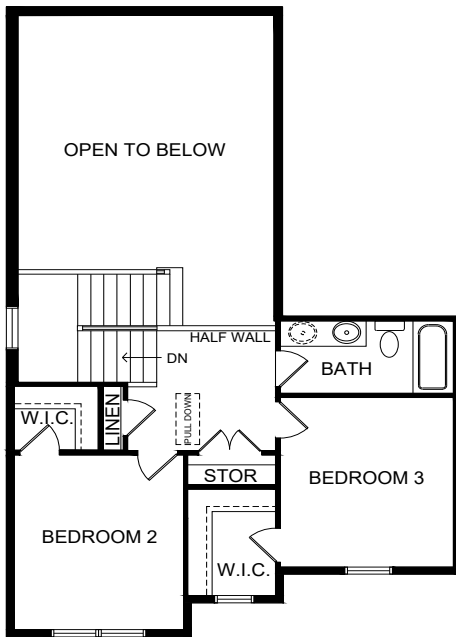
OPT. ENLARGED REAR COVERED PORCH



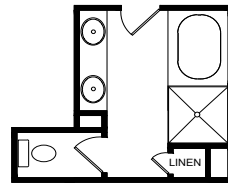
OPT. SCREEN PORCH W/ OPT. REAR FIREPLACE/ OPT. SEE THROUGH FIREPLACE



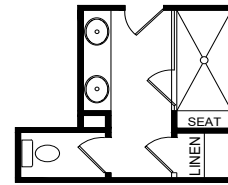
OPT. SUNROOM W/ OPT. REAR FIREPLACE/ OPT. 2 SIDED FIREPLACE



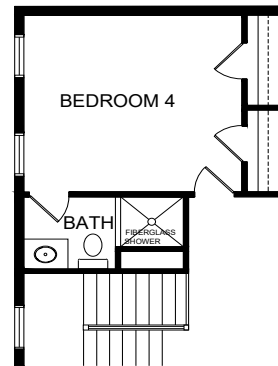
SECOND FLOOR PLAN



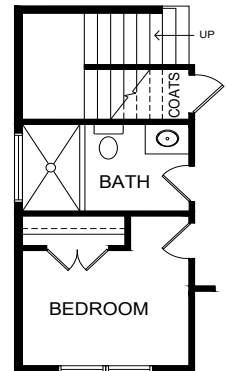
MASTER BATH  
OPTION 1 W/ CERAMIC  
TILE@GLASS PARTITION



MASTER BATH  
OPTION 2 W/  
LUXURY SHOWER



OPT. BEDROOM 4



OPT. FIRST  
FLOOR BDRM.



NAPOLITANO HOMES

-EST. 1977-

\*All floorplans based on Traditional Elevation