

THE MARINO



CRAFTSMAN



TRADITIONAL



FARMHOUSE

FEATURES:

3 - 4 Bedrooms

2.5 - 3.5 Bathrooms

2,334 - 2,968 sq ft

1st Floor Master Suite

3 - Car Garage

SALES COUNSELOR: TARA STRAUER

(757) 474-0888

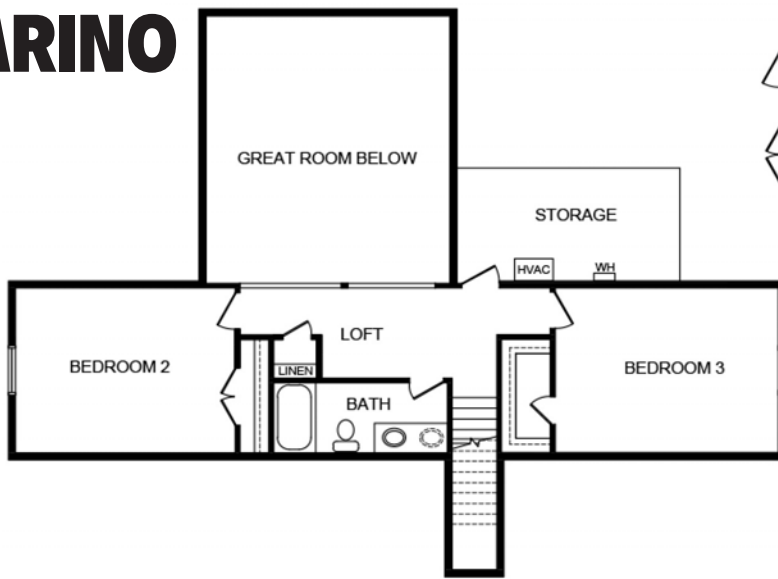
wentworth@napolitanohomes.com

www.napolitanohomes.com/wentworth

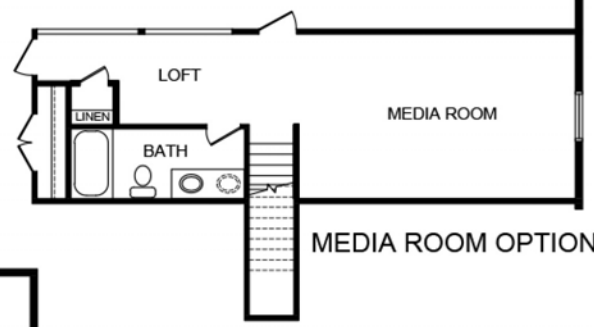
© Napolitano Homes, All Rights Reserved. All prices, plans, elevations, features, specifications, and materials are subject to change without notice or obligation. Illustrations and floor plans are artist's renderings, not architectural blueprints. Options and extra-cost upgrades such as stone and brick may be shown and may vary by neighborhood. Please consult with your sales counselor prior to writing an offer.



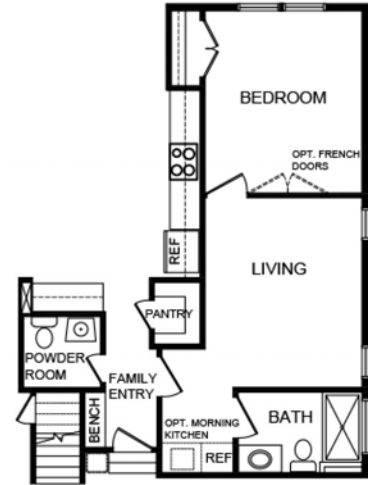
THE MARINO



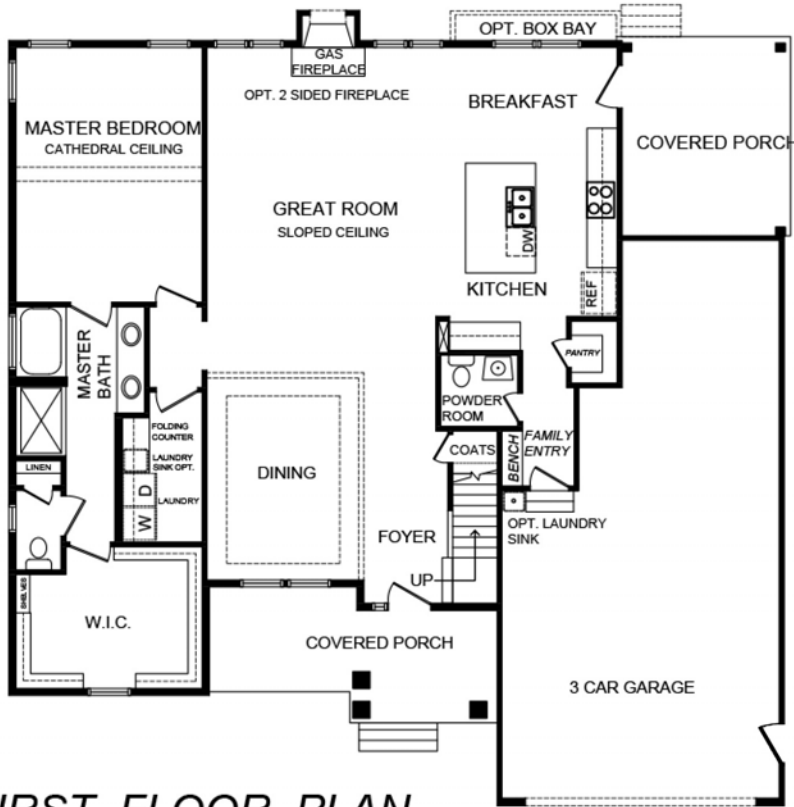
SECOND FLOOR PLAN



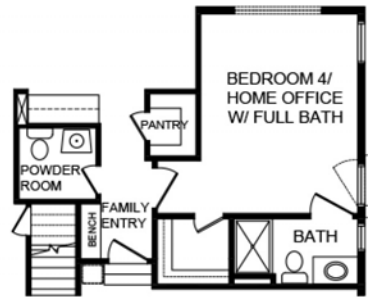
MEDIA ROOM OPTION



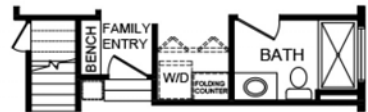
FULL GENERATION SUITE OPTION



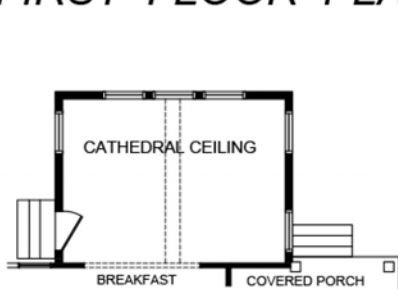
FIRST FLOOR PLAN



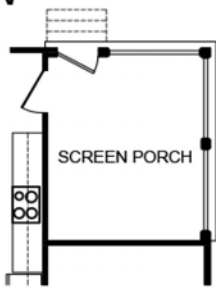
BEDROOM 4/ HOME OFFICE W/ BATH OPTION



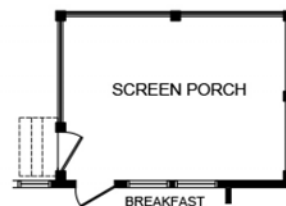
GEN SUIT LAUNDRY OPTION



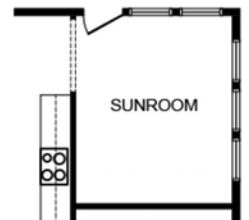
KEEPING ROOM OPTION



SCREEN PORCH OPTION #1



SCREEN PORCH OPTION #2



SUN ROOM OPTION



NAPOLITANO HOMES

-EST. 1977-

*All floorplans based on Traditional Elevation