

THE MARINO



CRAFTSMAN



TRADITIONAL



FARMHOUSE

FEATURES:

- 1st Floor Master Suite
- 3-Car Garage
- 3 - 4 Bedrooms
- 2.5 - 3.5 Bathrooms
- 2,334 - 3,383 square feet

KELLY MORAN REALTOR®

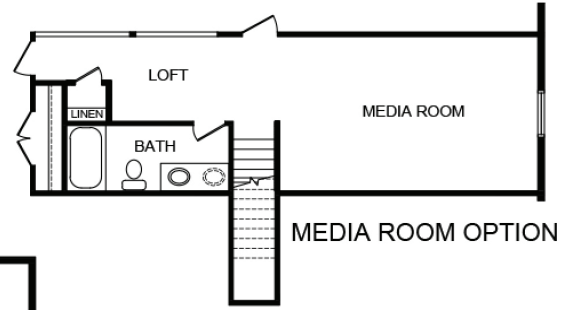
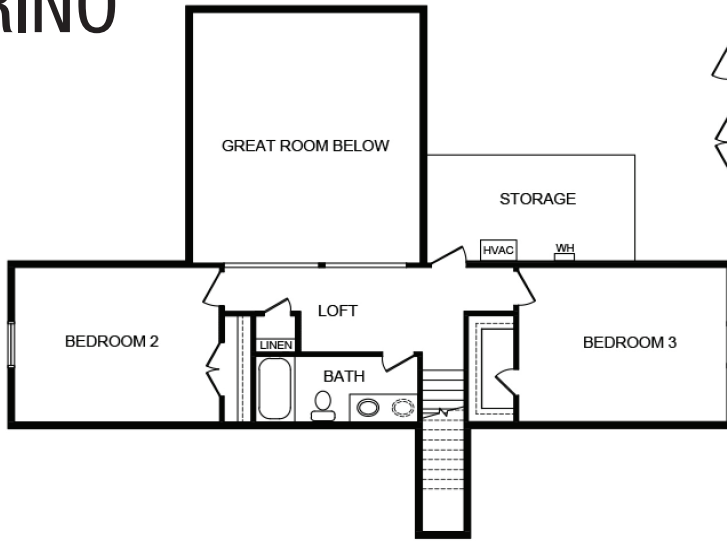
(757) 240-8680

heronspoint@napolitanohomes.com

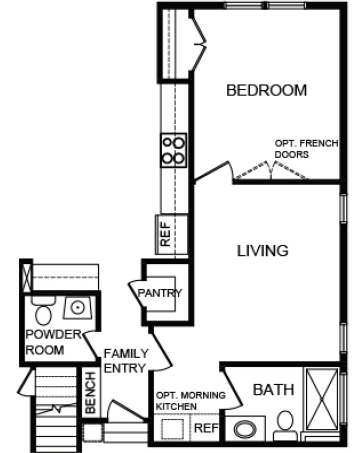
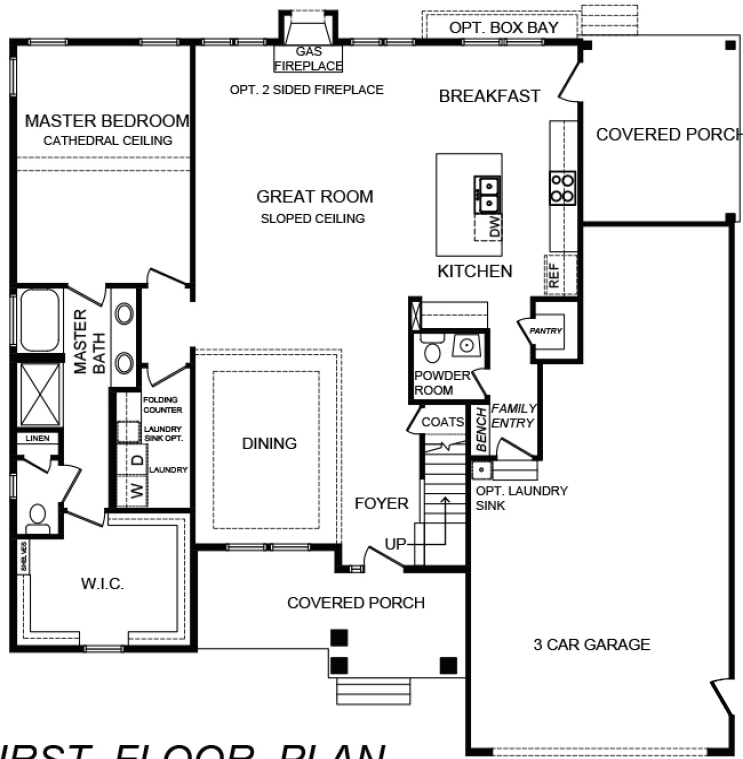
www.napolitanohomes.com/herons-point

Sales Office: 1012 White Heron's Lane • Suffolk, VA • 23434

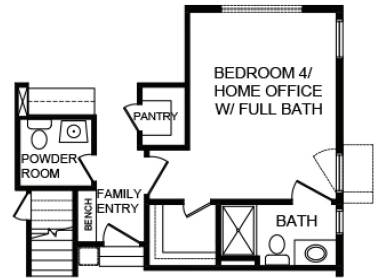
THE MARINO



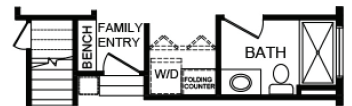
SECOND FLOOR PLAN



FULL GENERATION SUITE OPTION

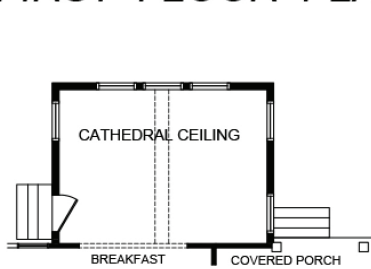


BEDROOM 4/ HOME OFFICE W/ BATH OPTION

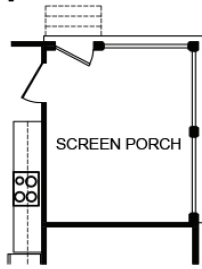


GEN SUIT LAUNDRY OPTION

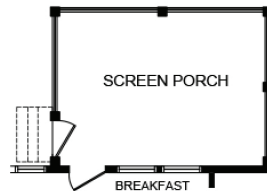
FIRST FLOOR PLAN



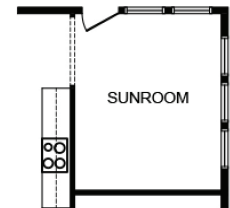
KEEPING ROOM OPTION



SCREEN PORCH OPTION #1



SCREEN PORCH OPTION #2



SUN ROOM OPTION



NAPOLITANO HOMES
~EST. 1977~



BERKSHIRE HATHAWAY | Towne Realty
HomeServices

*All floorplans based on Traditional Elevation