

THE *Beacon*

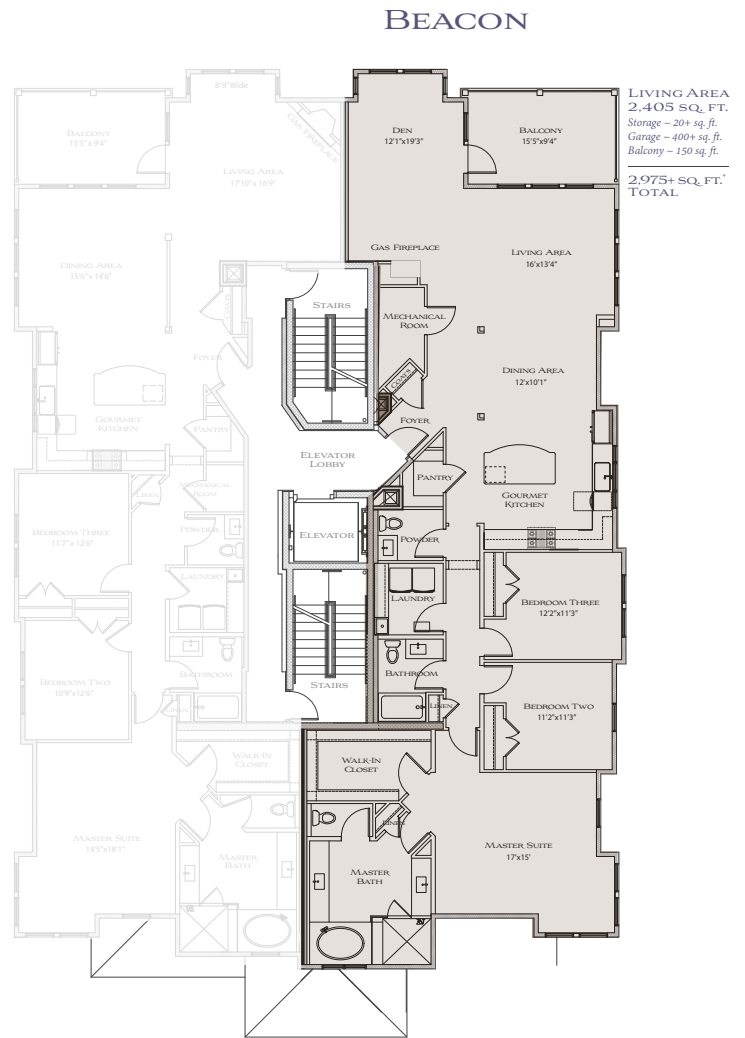


— POINT — CHESAPEAKE — ON THE BAY — *a condominium community*

3 Bedrooms 2.5 Bath Luxury Homes
2,405 Square Feet



Named for light, these modern beach home designs afford you a front row seat to the 'show', the big, beautiful Chesapeake Bay. Living and entertaining spaces are front and center with banks of windows to bring in the sunlight and bay view.



Picturesque Community with Private Beach Access • Clubhouse with Indoor & Outdoor Entertaining Space • Private Nostalgic Gazebo for Spectacular Sunset Views • Swimming Pool • Designer Selected Exterior Color Schemes • James Hardie Color Plus Cement Siding with Low Maintenance Trim • Secured Gated Entry into Neighborhood • Enjoy Spectacular Views From Large Picture Windows • Spacious Balcony with LED Lights for Outdoor Entertaining • Cozy Gas Fireplace • Gourmet Kitchen with Stainless Appliances, Gas Cooktop, Wine Cooler, & Grand Center Island • Spa-like Master Bath • Come Home To A Private Two-Car Garage with Storage Closet & Direct Access to Building • Quiet Elevator and 2 Convenient Stairwells for Egress and Ingress

Linda Bray
REALTOR®

Jennifer Dawn
REALTOR®

Office: (757) 286-6160
 PointChesapeake@BHHSTowne.com



Located off Shore Drive, Point Chesapeake Way, Virginia Beach Virginia 23451
[www. PointChesapeakeOnTheBay.com](http://www.PointChesapeakeOnTheBay.com)

1101 Laskin Rd. | Virginia Beach, VA 23451 | (757) 481-8400