

THE BELMONT



CRAFTSMAN



TRADITIONAL



TRANSITIONAL

FEATURES:

4 - 6 Bedrooms

2.5 - 4 Bathrooms

2,557 - 2,740 sq ft

Open Kitchen and
Family Rm, Living Rm

SALES COUNSELOR: TARA STRAUER

757-718-6322

wentworth@napolitanohomes.com

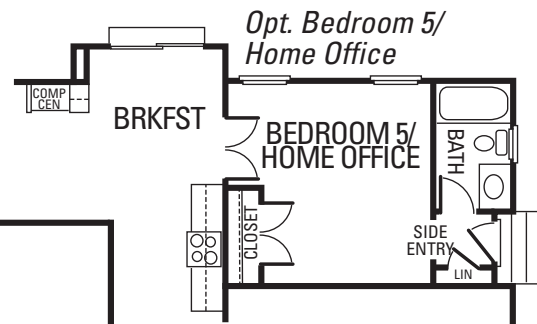
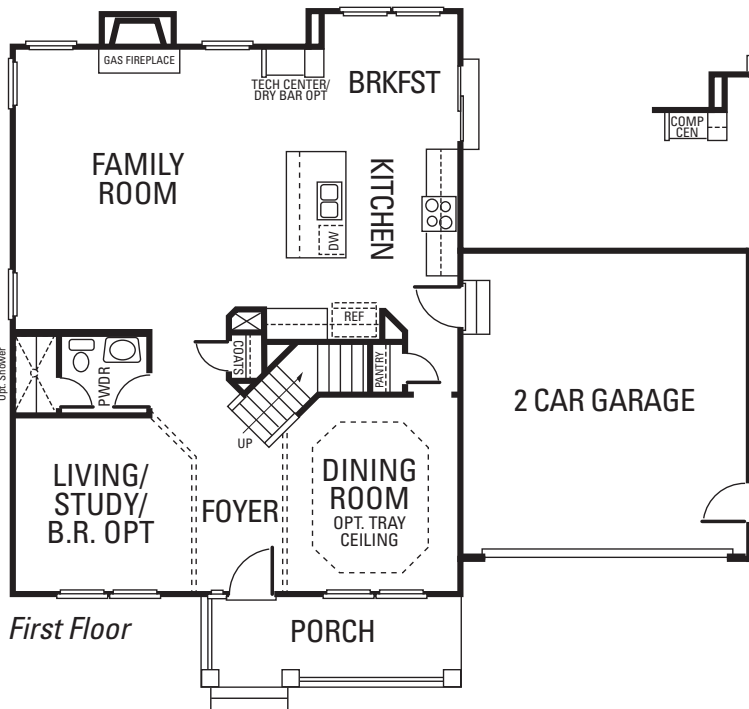
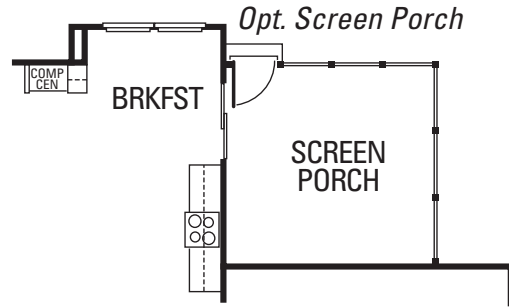
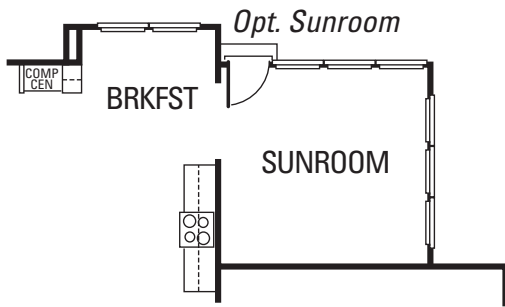
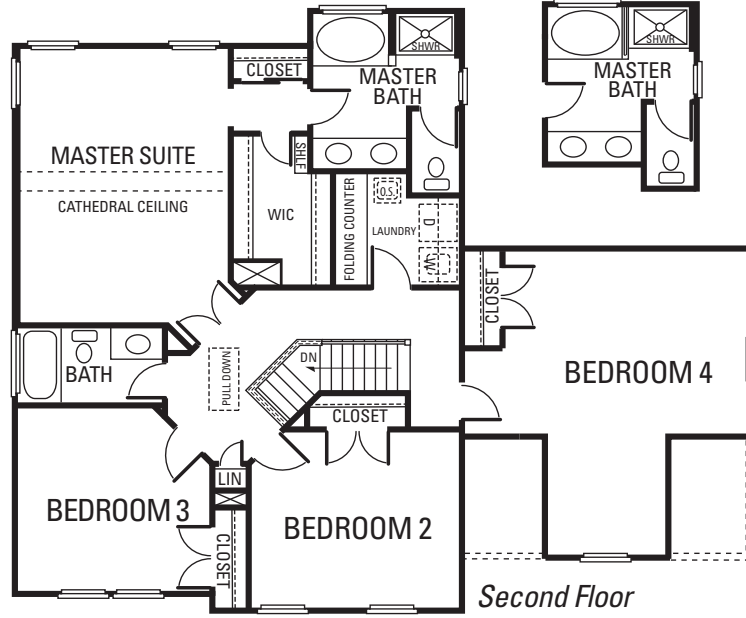
www.napolitanohomes.com/wentworth

© Napolitano Homes, All Rights Reserved. All prices, plans, elevations, features, specifications, and materials are subject to change without notice or obligation. Illustrations and floor plans are artist's renderings, not architectural blueprints. Options and extra-cost upgrades such as stone and brick may be shown and may vary by neighborhood. Please consult with your sales counselor prior to writing an offer.



THE BELMONT

*Opt. Master Bath
w/ ceramic shower
and glass partition*



*All floorplans based on Traditional Elevation

