

# THE MILAN



CRAFTSMAN



TRADITIONAL



TRANSITIONAL

## FEATURES:

4 Bedrooms

2.5 Bathrooms

2,672 - 2,930 sq ft

First Floor Master

Study, Soaring Ceilings

## SALES COUNSELOR: TARA STRAUER

757-718-6322

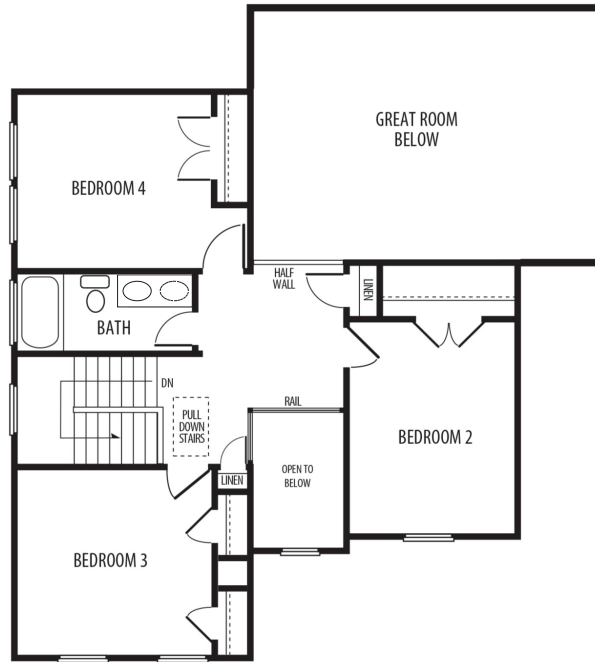
[wentworth@napolitanohomes.com](mailto:wentworth@napolitanohomes.com)

[www.napolitanohomes.com/wentworth](http://www.napolitanohomes.com/wentworth)

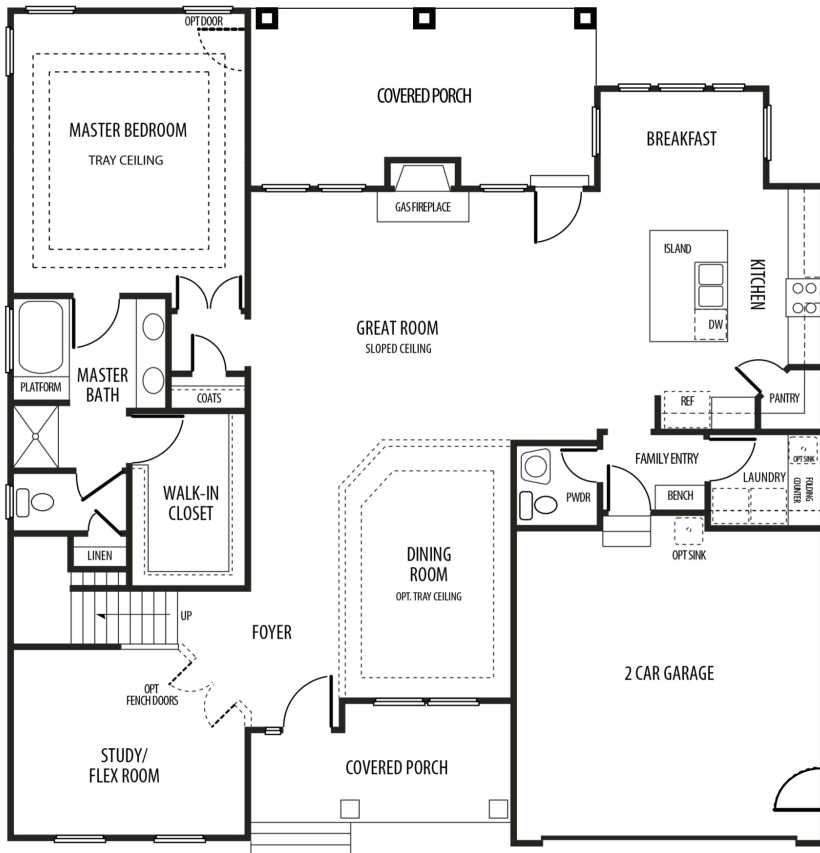
© Napolitano Homes, All Rights Reserved. All prices, plans, elevations, features, specifications, and materials are subject to change without notice or obligation. Illustrations and floor plans are artist's renderings, not architectural blueprints. Options and extra-cost upgrades such as stone and brick may be shown and may vary by neighborhood. Please consult with your sales counselor prior to writing an offer.



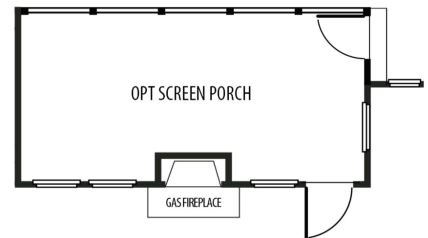
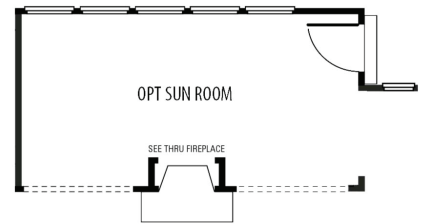
# THE MILAN



Second Floor



First Floor



NAPOLITANO HOMES

-EST. 1977-

\*All floorplans based on Traditional Elevation