

# THE MILAN II



CRAFTSMAN



TRADITIONAL



TRANSITIONAL

## FEATURES:

5 Bedrooms

3.5 Bathrooms

3,306 - 3,564 sq ft

TWO Master Suites,

Study, Soaring Ceilings

## SALES COUNSELOR: KELLY MORAN

(757) 240-8680

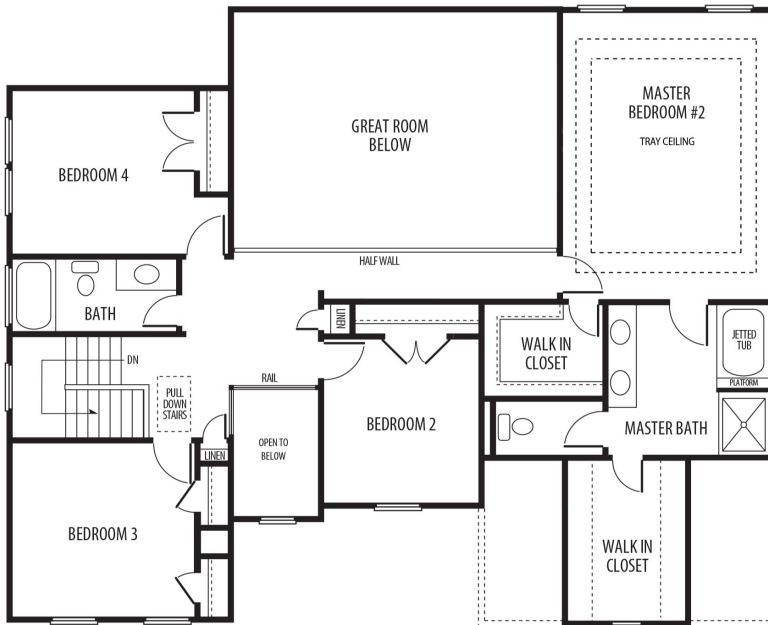
[heronspoint@napolitanohomes.com](mailto:heronspoint@napolitanohomes.com)

[www.napolitanohomes.com/herons-point](http://www.napolitanohomes.com/herons-point)

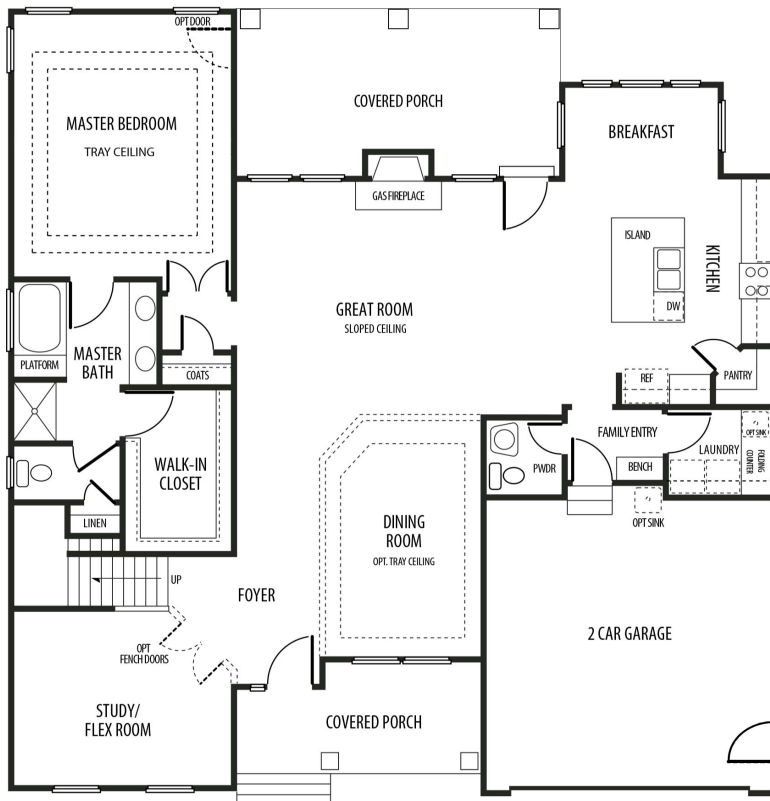
© Napolitano Homes, All Rights Reserved. All prices, plans, elevations, features, specifications, and materials are subject to change without notice or obligation. Illustrations and floor plans are artist's renderings, not architectural blueprints. Options and extra-cost upgrades such as stone and brick may be shown and may vary by neighborhood. Please consult with your sales counselor prior to writing an offer.



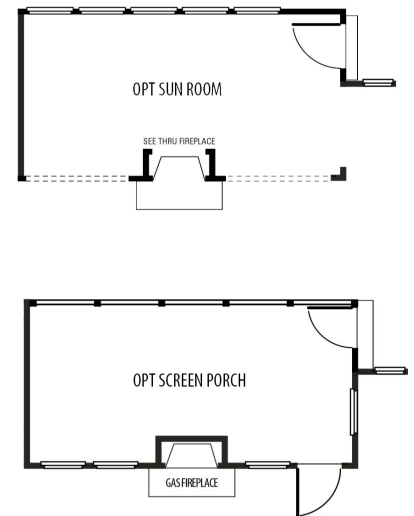
# THE MILAN II



Second Floor



First Floor



\*All floorplans based on Traditional Elevation