

THE MONTEREY



TRADITIONAL



CRAFTSMAN



TRANSITIONAL

FEATURES:

3 - 5 Bedrooms
2.5 - 4 Bathrooms
2,220 - 2,718 sq ft
First Floor Bed/Study

SALES COUNSELOR: DIANA JORDAN

(757) 284-1845

diana@napolitanohomes.com

www.napolitanohomes.com/new-homes/suffolk/community/kings-fork-village/

© Napolitano Homes, All Rights Reserved. All prices, plans, elevations, features, specifications, and materials are subject to change without notice or obligation. Illustrations and floor plans are artist's renderings, not architectural blueprints. Options and extra-cost upgrades such as stone and brick may be shown and may vary by neighborhood. Please consult with your sales counselor prior to writing an offer.



EQUAL HOUSING
OPPORTUNITY

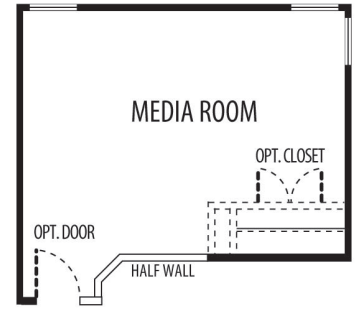
THE MONTEREY

Opt. Master Bath with ceramic shower and glass partition

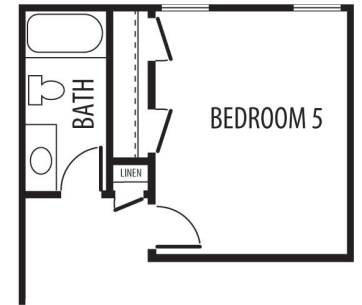


Second Floor

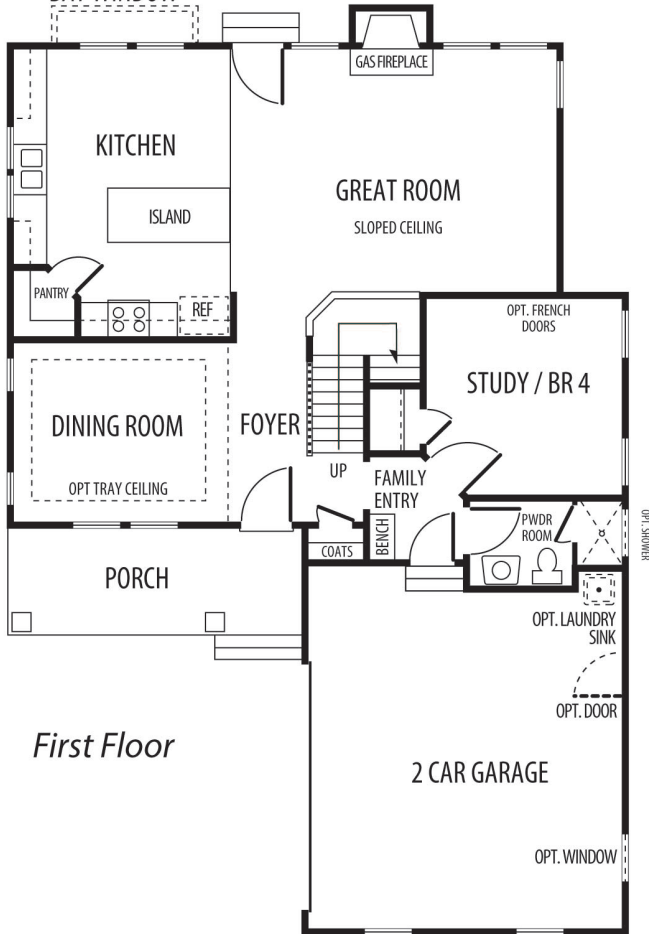
Media Room Option



Bedroom 5 Option

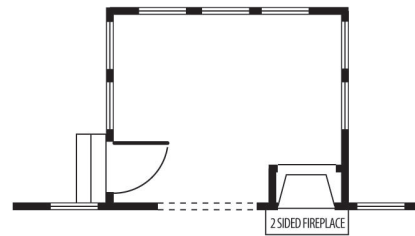


OPTIONAL BAY WINDOW

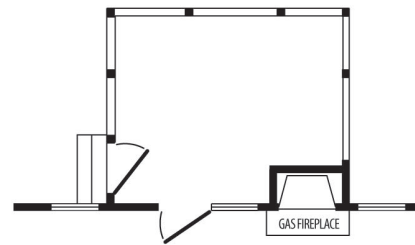


First Floor

Sunroom Option



Screen Porch Option



*All floorplans based on Traditional Elevation

