

# THE NOVARO



CRAFTSMAN



TRADITIONAL



FARMHOUSE

## FEATURES:

4-5 Bedrooms

2.5-3 Bathrooms

2,020 - 2,358 sq ft

Efficient open concept

**SALES COUNSELOR: DIANA JORDAN**

(757) 284-1845

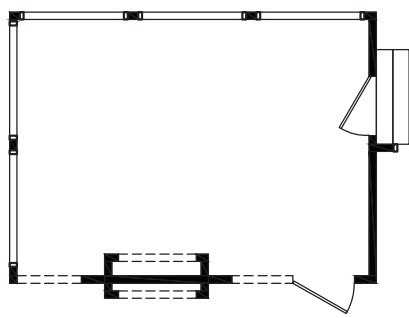
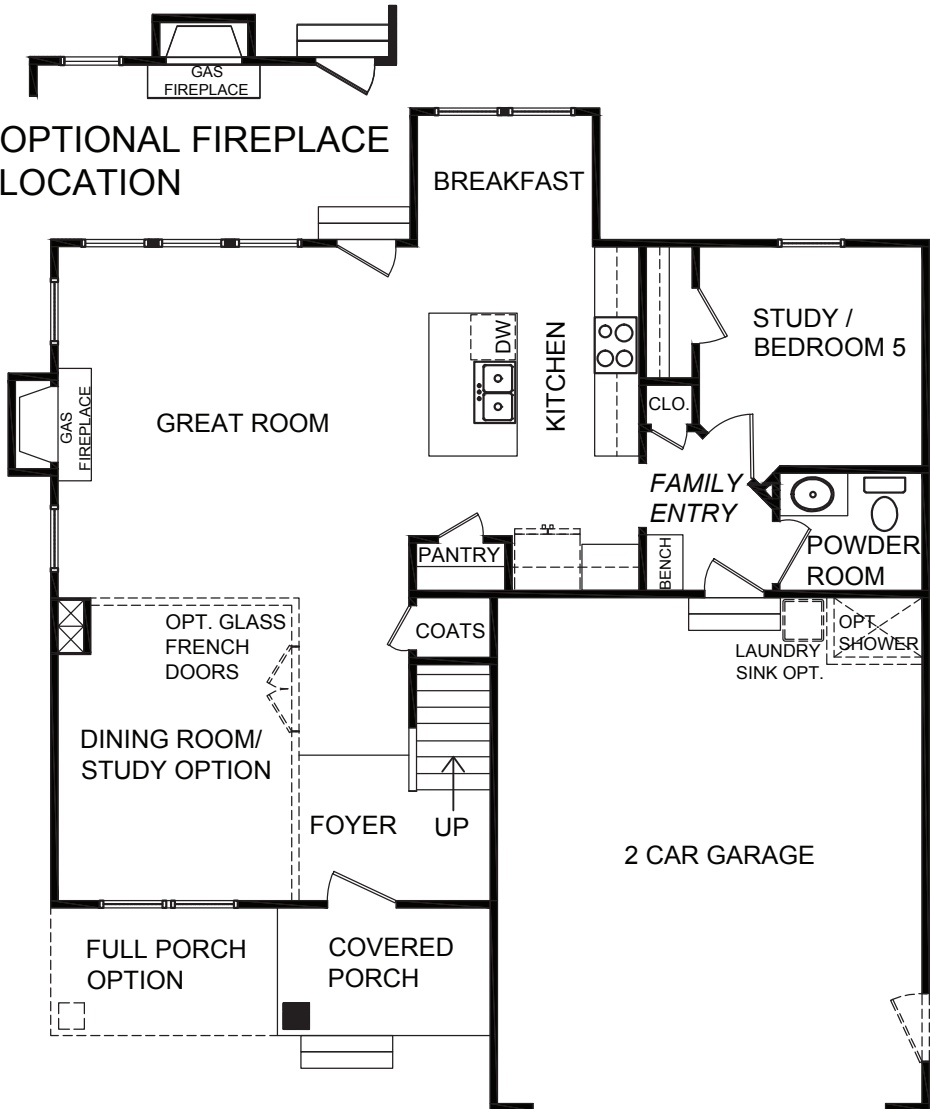
[diana@napolitanohomes.com](mailto:diana@napolitanohomes.com)

[www.napolitanohomes.com/new-homes/suffolk/community/kings-fork-village/](http://www.napolitanohomes.com/new-homes/suffolk/community/kings-fork-village/)

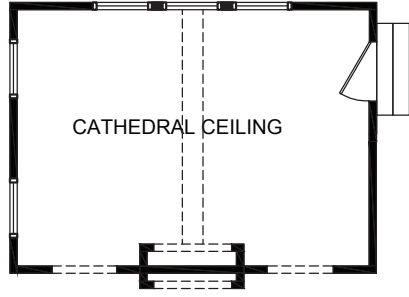
© Napolitano Homes, All Rights Reserved. All prices, plans, elevations, features, specifications, and materials are subject to change without notice or obligation. Illustrations and floor plans are artist's renderings, not architectural blueprints. Options and extra-cost upgrades such as stone and brick may be shown and may vary by neighborhood. Please consult with your sales counselor prior to writing an offer.



# NOVARO

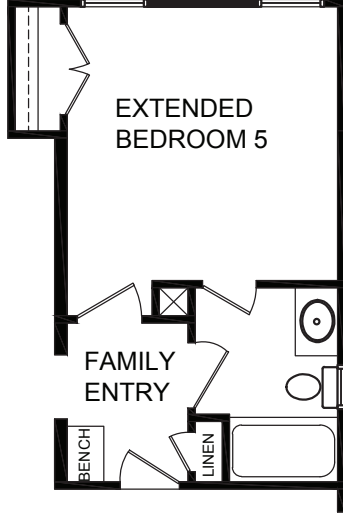
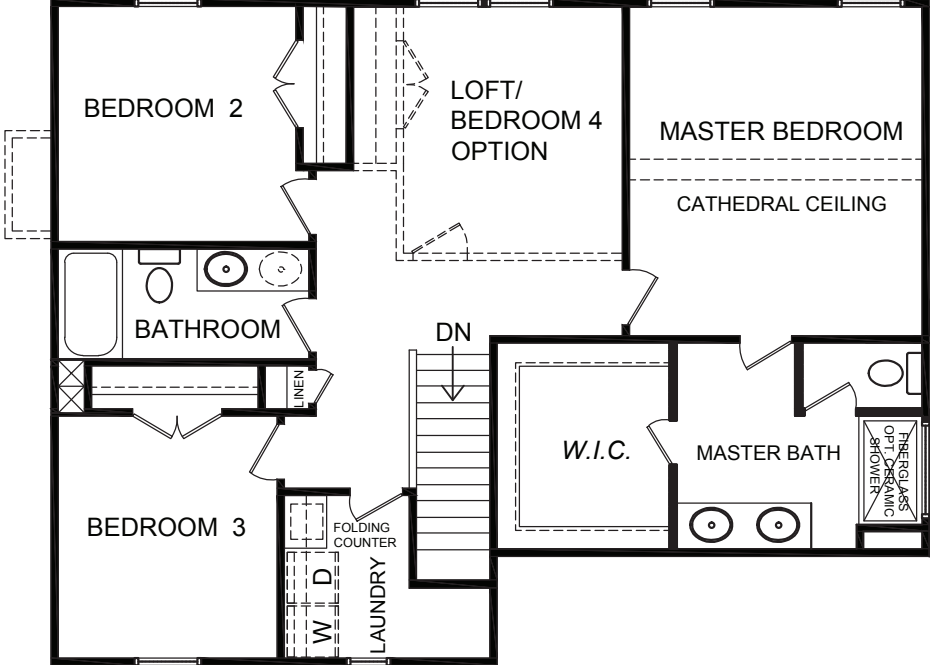


SCREEN PORCH OPTION W/ OPT. INDOOR OUTDOOR FIREPLACE



SUN ROOM OPTION W/ 2 SIDED FIREPLACE OPTION

FIRST FLOOR PLAN



EXTENDED BEDROOM 5 W/ FULL BATH OPTION

SECOND FLOOR PLAN

\*All floorplans based on Traditional Elevation