

# THE SPINNAKER



CRAFTSMAN



TRADITIONAL



TRANSITIONAL

## FEATURES:

3 - 5 Bedrooms

2.5 - 3.5 Bathrooms

2,162 - 2,706 sq ft

1st Floor Master Suite,  
4th Bedroom/Loft Opt

## SALES COUNSELOR: **DIANA JORDAN**

(757) 284-1845

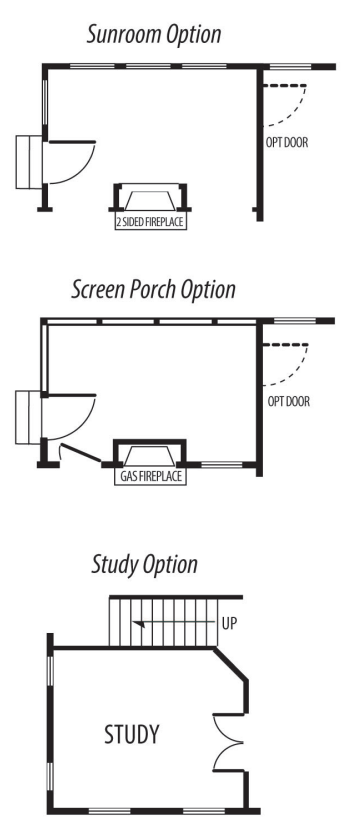
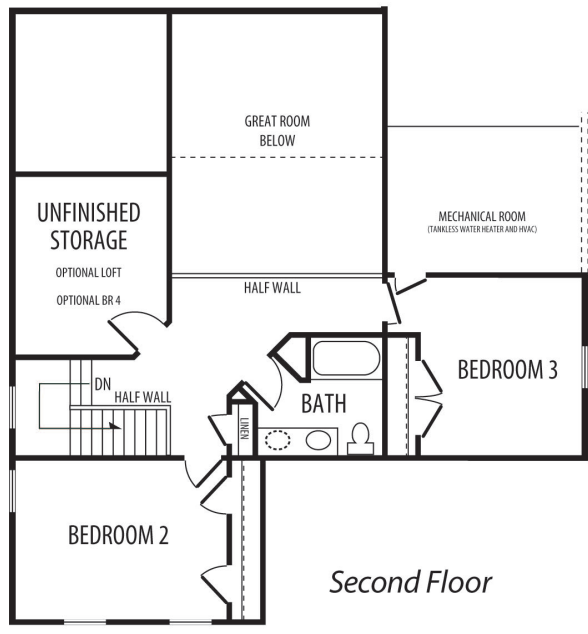
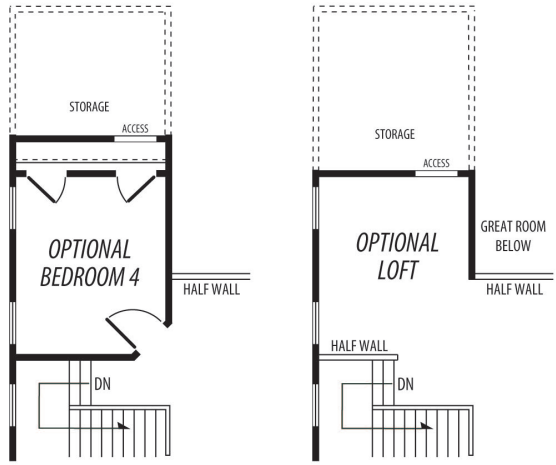
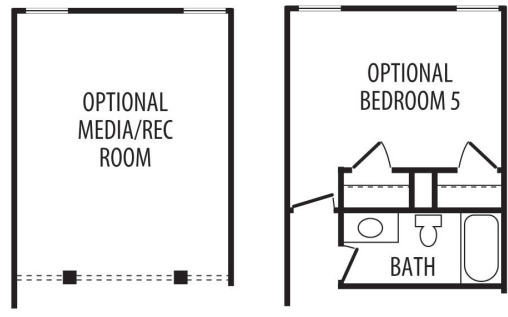
[diana@napolitanohomes.com](mailto:diana@napolitanohomes.com)

[www.napolitanohomes.com/new-homes/suffolk/community/kings-fork-village/](http://www.napolitanohomes.com/new-homes/suffolk/community/kings-fork-village/)

© Napolitano Homes, All Rights Reserved. All prices, plans, elevations, features, specifications, and materials are subject to change without notice or obligation. Illustrations and floor plans are artist's renderings, not architectural blueprints. Options and extra-cost upgrades such as stone and brick may be shown and may vary by neighborhood. Please consult with your sales counselor prior to writing an offer.



# THE SPINNAKER



\*All floorplans based on Traditional Elevation