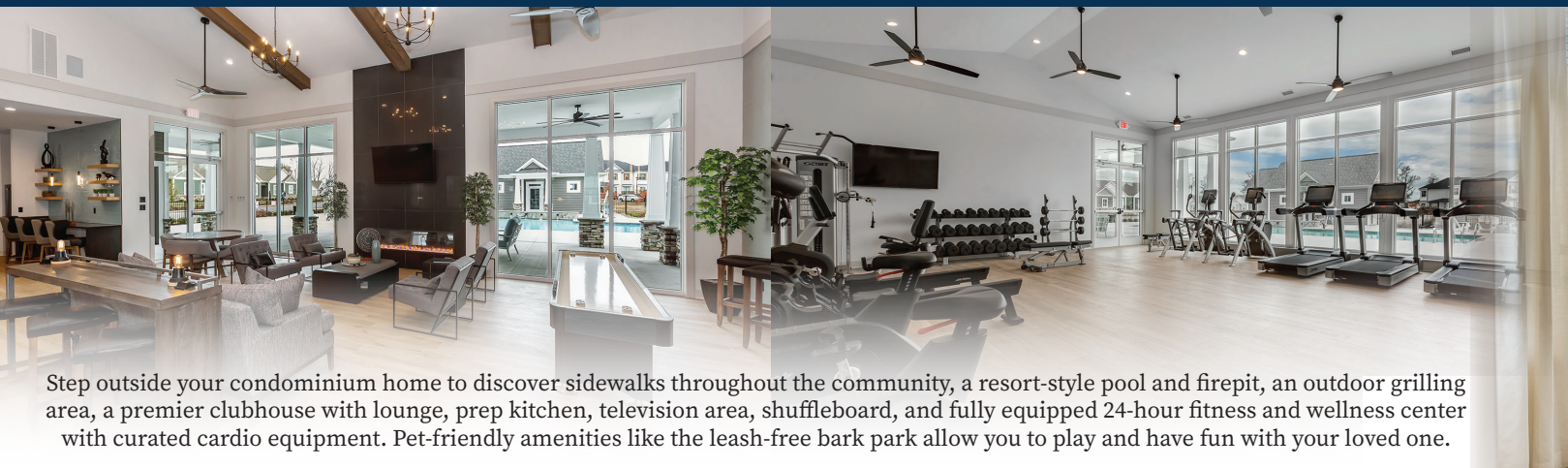


Community



Amenities



Redefining Condominium Living.



THE VINEYARDS™

AT

Bennett's Creek Quarter



1013 Paragon Way • Suffolk, Virginia 23435



Diana Jordan, Sales Consultant
757.992.8809
vineyardsBCQ@napolitanohomes.com
1013 Paragon Way • Suffolk, Virginia 23435



THE VINEYARDSTM

AT
Bennett's Creek Quarter

HOMES DESIGNED WITH YOU IN MIND.

Welcome Home to The Vineyards, a vibrant single-story condominium community within Bennett's Creek Quarter off of Shoulders Hill Road in Northern Suffolk, Just a quarter of a mile from 17/Bridge Road which is known as the Coastal Highway. Located just minutes from coffee shops, dining, entertainment, parks, local and national retailers & more including Bridgeport and Harbourview.

The Veneto

2/3 BR • 2/3 BA • 1,520 - 2,026 SF



Open. Spacious. Perfectly Designed. By incorporating soaring ceilings throughout the dining and great rooms, the Veneto is designed to take advantage of natural lighting throughout its incredibly open concept design. The fluid transitions between living spaces and panoramic views of the entire home make the Veneto a deceptively spacious home.

The Lombardy

3/4 BR • 2/3 BA • 1,642 - 2,168 SF



Cozy. Efficient. Functional. A home designed around a central courtyard, the Lombardy is bathed in natural light throughout. High ceilings enhance the spaciousness while maintaining a cozy feel when you walk through your front door.

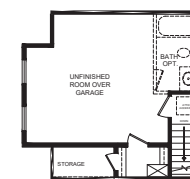
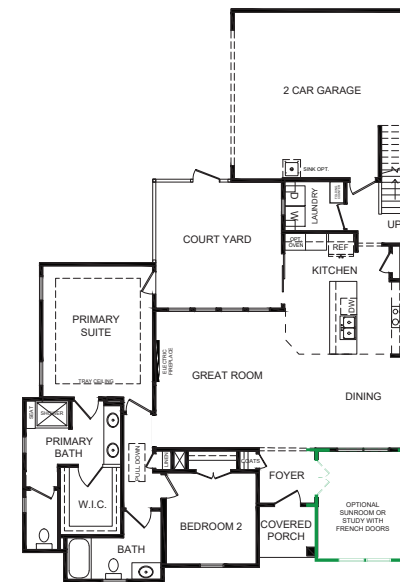
The Tuscany

3/4 BR • 2/3 BA • 1,834 - 2,374 SF



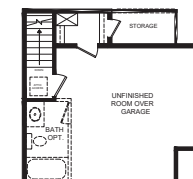
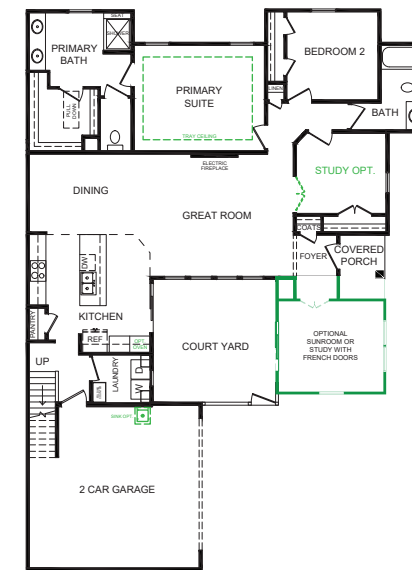
Roomy. Welcoming. An Entertainer's Dream. The Tuscany immediately embraces you upon walking through the front door with a spacious and open living area. The large central kitchen island is the heart of the home when having family over or entertaining with close friends.

The Veneto



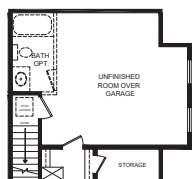
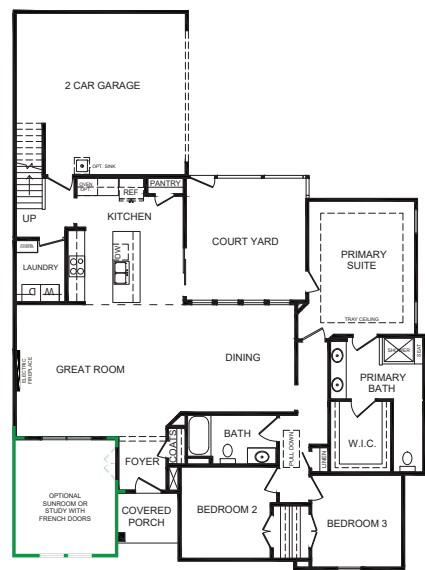
SECOND FLOOR PLAN
ROOM OVER GARAGE

The Lombardy



SECOND FLOOR PLAN
ROOM OVER GARAGE

The Tuscany



SECOND FLOOR PLAN
ROOM OVER GARAGE

Every community has a purpose and The Vineyards at Bennett's Creek Quarter offers a true lock-and-leave lifestyle with maintenance-free exteriors allowing more time for the things that you want to do without the stresses of yard work.

Our three condominium home types are designed to delight and feature an open concept with soaring 9-10 foot ceilings, high-end kitchens perfect for entertaining a crowd of any size, private courtyards allowing you to expand your interior living space, and high-end details like spa-like baths to soothe the day away. Designed to deliver the space to be exactly who YOU are and live a true lock and leave lifestyle.

All plans, elevations, feature, specifications and materials are subject to change without notice or obligation. Illustrations and floor plans are artist renderings, not architectural blueprints. Options and extra-cost upgrades may be shown and may vary by community or model. Please consult with your sales agent prior to writing an offer.

DO YOU
LOVE
WHERE YOU
LIVE?TM



NAPOLITANO HOMES
- EST. 1977 -