

THE WATERFORD



TRANSITIONAL



TRADITIONAL



CRAFTSMAN

FEATURES:

4 - 6 Bedrooms
2.5 - 4 Bathrooms
2,738 - 3,352 sq ft
Soaring Ceilings,
Private Study

SALES COUNSELOR: **TARA STRAUSER**

757-718-6322

wentworth@napolitanohomes.com

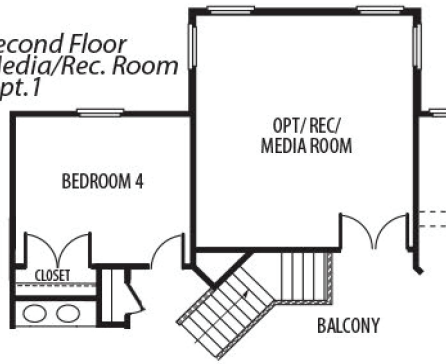
www.napolitanohomes.com/wentworth

© Napolitano Homes, All Rights Reserved. All prices, plans, elevations, features, specifications, and materials are subject to change without notice or obligation. Illustrations and floor plans are artist's renderings, not architectural blueprints. Options and extra-cost upgrades such as stone and brick may be shown and may vary by neighborhood. Please consult with your sales counselor prior to writing an offer.

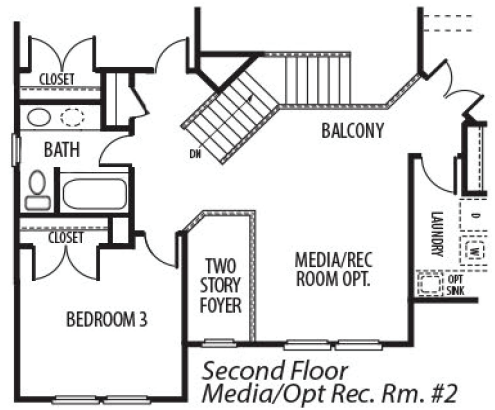
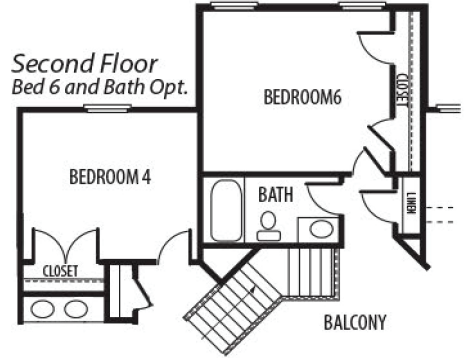


THE WATERFORD

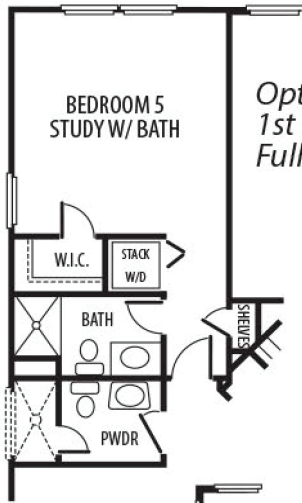
Second Floor
Media/Rec. Room
Opt. 1



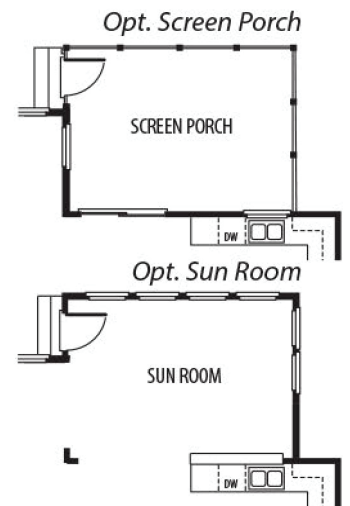
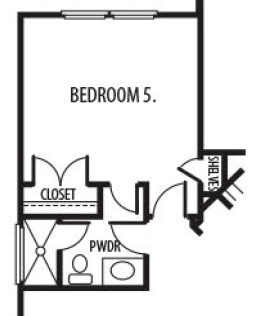
Second Floor
Bed 6 and Bath Opt.



Opt. Extended
1st Floor BR 5/Study w/
Full Bath & W/D opt.



Opt. Bedroom 5



First Floor



NAPOLITANO HOMES

-EST. 1977-

*All floorplans based on Traditional Elevation