

THE MILAN II



CRAFTSMAN



TRADITIONAL



TRANSITIONAL

FEATURES:

5 Bedrooms
3.5 Bathrooms
3,306 - 3,564 sq ft
TWO Primary Suites,
Study, Soaring Ceilings

SALES COUNSELOR: KELLY MORAN

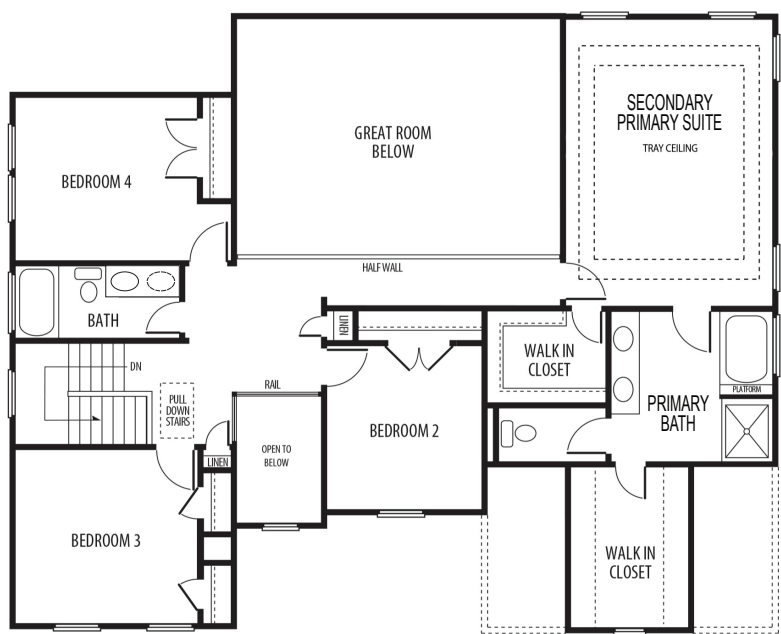
757-240-8680 • NR@napolitanohomes.com
www.napolitanohomes.com/new-homes/suffolk/community/nr/

MODEL HOME & SALES OFFICE: 104 Secretariat Drive, Suffolk, VA 23435

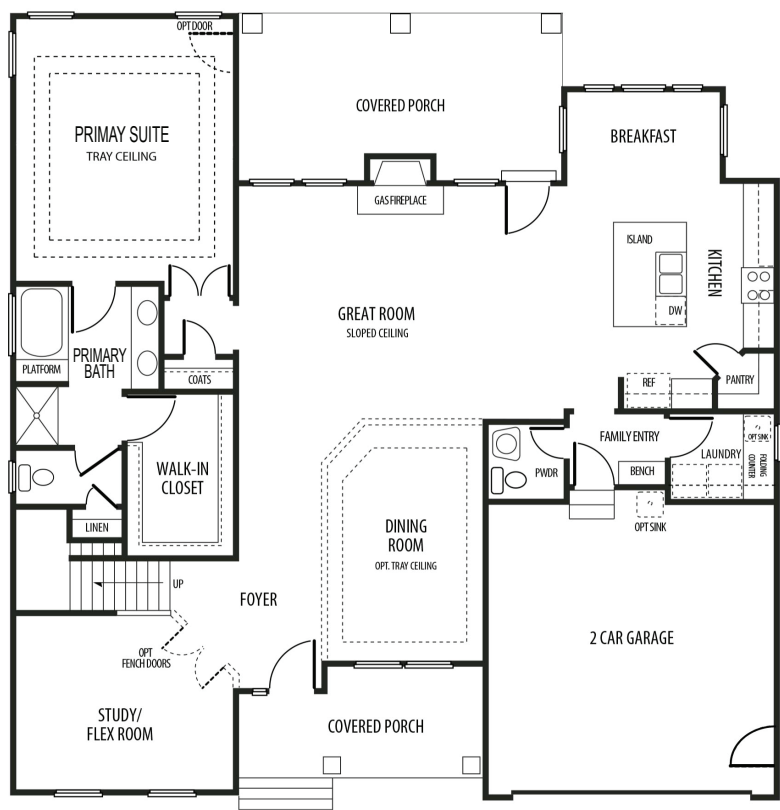
© Napolitano Homes, All Rights Reserved. All prices, plans, elevations, features, specifications, and materials are subject to change without notice or obligation. Illustrations and floor plans are artist's renderings, not architectural blueprints. Options and extra-cost upgrades such as stone and brick may be shown and may vary by neighborhood. Please consult with your sales counselor prior to writing an offer.



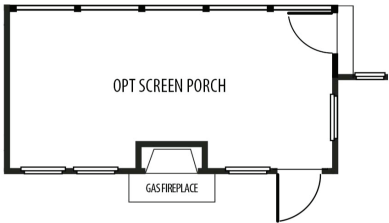
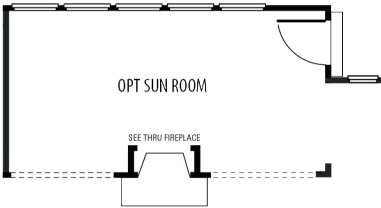
THE MILAN II



Second Floor



First Floor



*All floorplans based on Traditional Elevation