

THE AVELLINO



CRAFTSMAN



TRADITIONAL



FARMHOUSE

FEATURES:

- Ranch with Room Over Garage
- 3 - 4 Bedrooms
- 2.5 - 3.5 Bathrooms
- 2,100 - 2,362 square feet

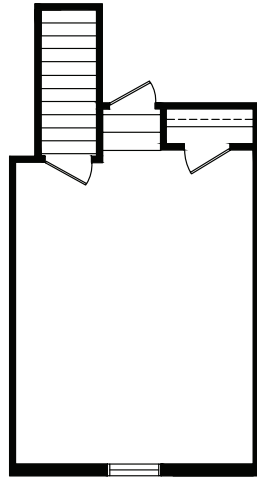
SALES COUNSELOR: KELLY MORAN

757-240-8680 • NR@napolitanohomes.com

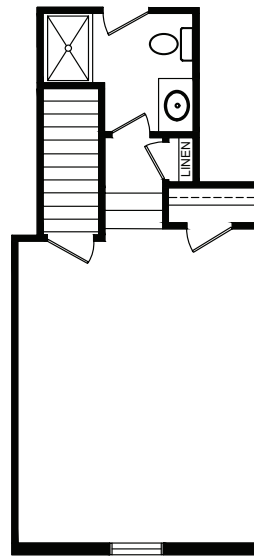
www.napolitanohomes.com/new-homes/suffolk/community/nr/

MODEL HOME & SALES OFFICE: 104 Secretariat Drive, Suffolk, VA 23435

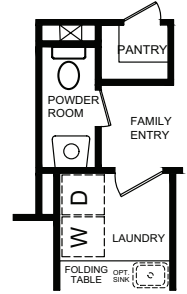
AVELLINO



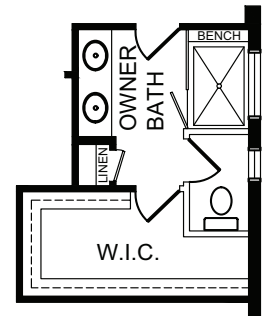
ROOM OVER GARAGE



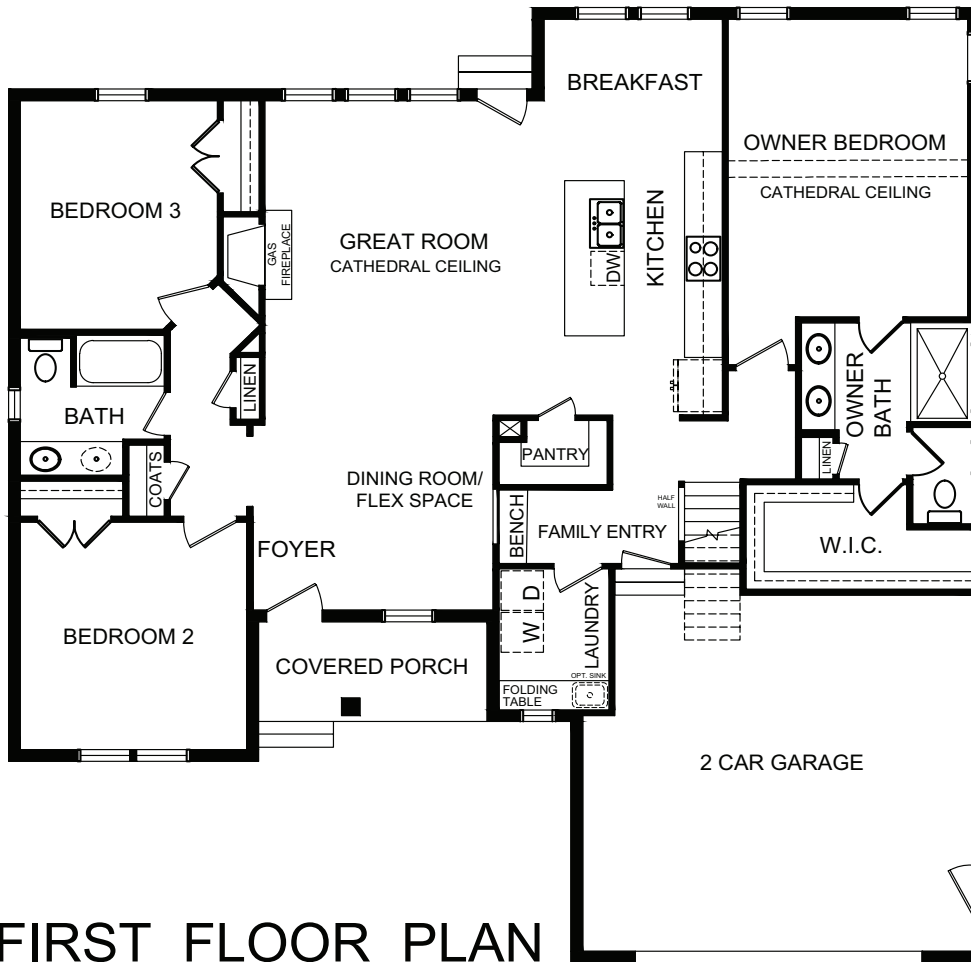
BEDROOM 4/ W/
FULL BATH OPTION



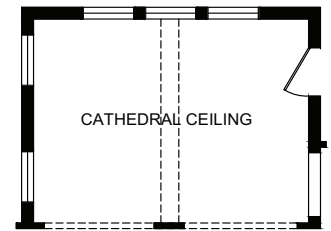
POWDER ROOM OPTION



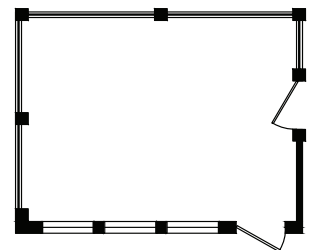
OPT. OWNER BATH W/
CERAMIC TILE SHOWER
AND GLASS PARTITION



FIRST FLOOR PLAN



SUNROOM OPTION



SCREEN PORCH OPTION



NAPOLITANO HOMES
-EST. 1977-



BERKSHIRE HATHAWAY | Towne Realty
HomeServices

*All floorplans based on Traditional Elevation

© Napolitano Homes, All Rights Reserved. All prices, plans, elevations, features, specifications, and materials are subject to change without notice or obligation. Illustrations and floor plans are artist's renderings, not architectural blueprints. Options and extra-cost upgrades such as stone and brick may be shown and may vary by neighborhood. Please consult with your sales counselor prior to writing an offer.

REV 5.19.2021