

THE CALABRIA



CRAFTSMAN



TRADITIONAL



FARMHOUSE

FEATURES:

Efficient Open Concept,
1st Floor Master Suite
3 - 4 Bedrooms
2.5 Bathrooms
2,312 - 2,518 square feet

SALES COUNSELOR: KELLY MORAN

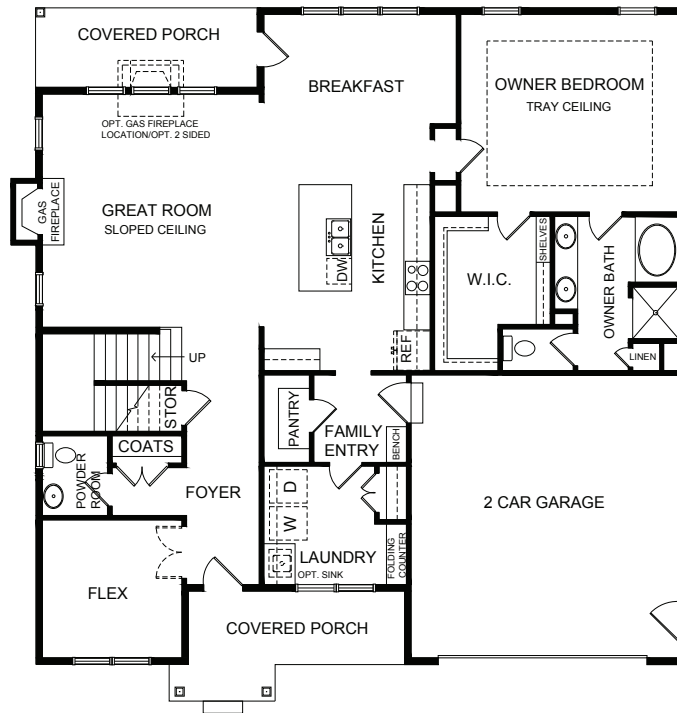
757-240-8680 • NR@napolitanohomes.com

www.napolitanohomes.com/new-homes/suffolk/community/nr/

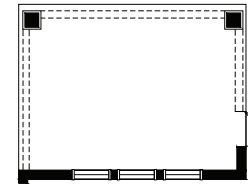
SALES OFFICE: 1012 White Heron's Lane, Suffolk, VA 23435

MODEL HOME: 104 Secretariat Drive, Suffolk, VA 23435

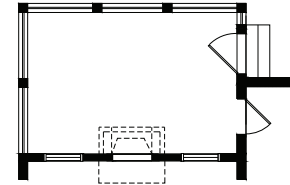
THE CALABRIA



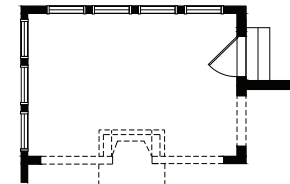
FIRST FLOOR PLAN



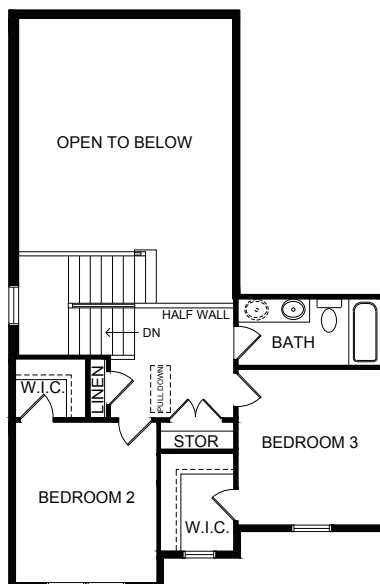
OPT. ENLARGED REAR COVERED PORCH



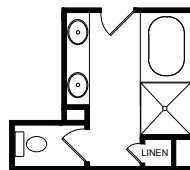
OPT. SCREEN PORCH W/
OPT. REAR FIREPLACE/ OPT.
SEE THROUGH FIREPLACE



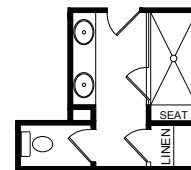
OPT. SUNROOM W/ OPT.
REAR FIREPLACE/ OPT.
2 SIDED FIREPLACE



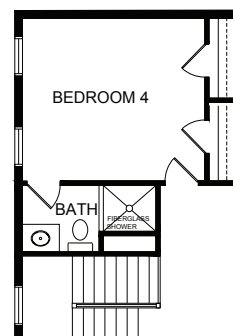
SECOND FLOOR PLAN



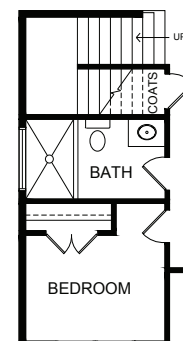
OWNER BATH
OPTION 1 W/ CERAMIC
TILE SHOWER
& GLASS PARTITION



OWNER BATH
OPTION 2 W/ LUXURY
CERAMIC TILE SHOWER



OPT. BEDROOM 4



OPT. FIRST
FLOOR BDRM.



NAPOLITANO HOMES
~EST. 1977~



BERKSHIRE HATHAWAY | Towne Realty
HomeServices

*All floorplans based on Traditional Elevation