

# THE CAPRI II



CRAFTSMAN



TRADITIONAL



FARMHOUSE

## FEATURES:

- 4 - 6 Bedrooms
- 3.5 - 4.5 Bathrooms
- 2,954 - 3,362 sq ft
- Spacious Plan, Back Porch, 3 Full Baths

**SALES COUNSELOR: KELLY MORAN**

757-240-8680 • [NR@napolitanohomes.com](mailto:NR@napolitanohomes.com)

[www.napolitanohomes.com/new-homes/suffolk/community/nr/](http://www.napolitanohomes.com/new-homes/suffolk/community/nr/)

**SALES OFFICE & MODEL HOME:** 104 Secretariat Drive, Suffolk, VA 23435

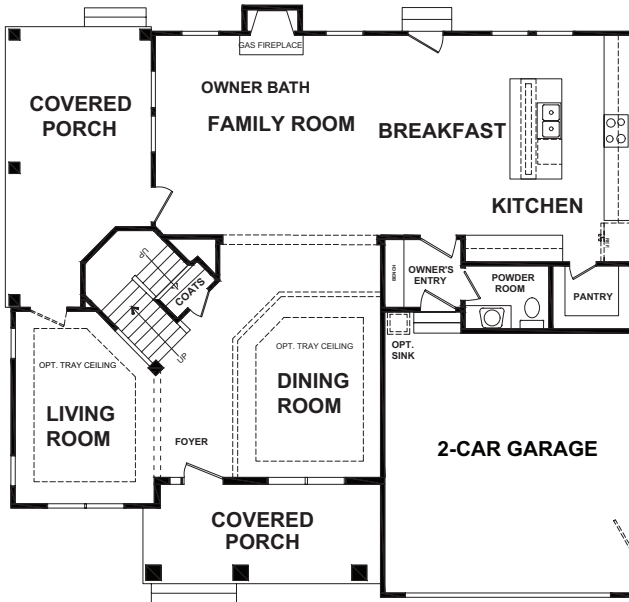
© Napolitano Homes, All Rights Reserved. All prices, plans, elevations, features, specifications, and materials are subject to change without notice or obligation. Illustrations and floor plans are artist's renderings, not architectural blueprints. Options and extra-cost upgrades such as stone and brick may be shown and may vary by neighborhood. Please consult with your sales counselor prior to writing an offer.



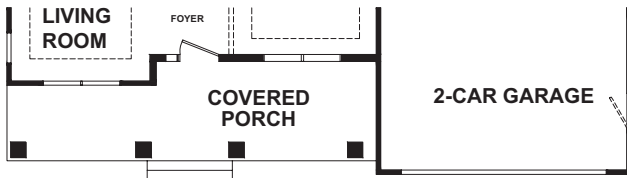
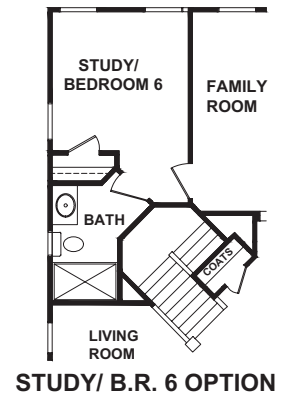
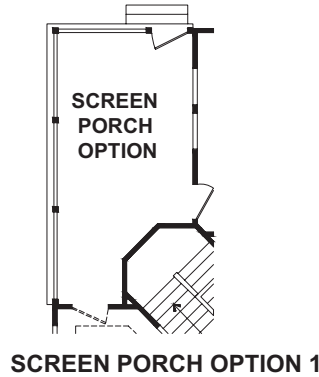
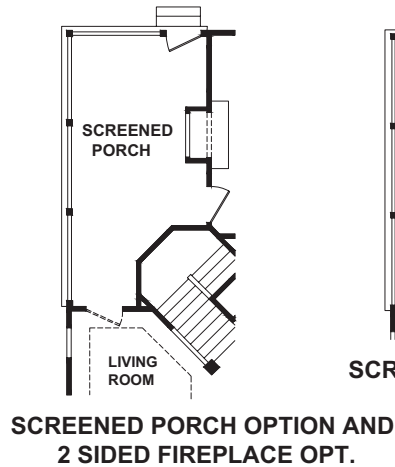
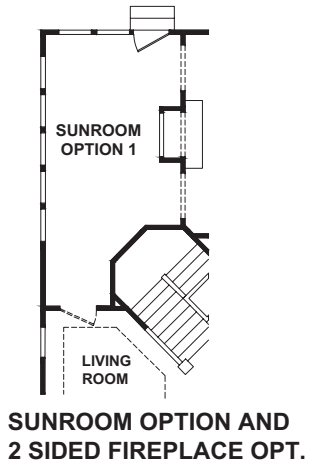
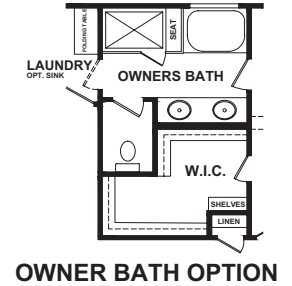
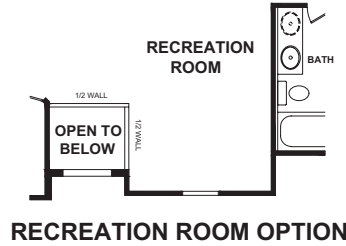
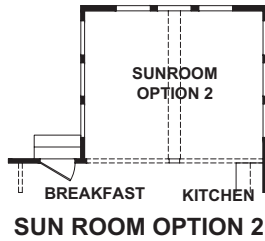
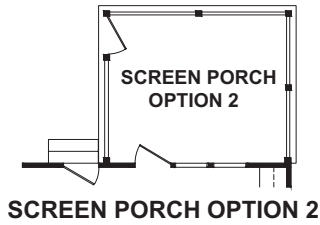
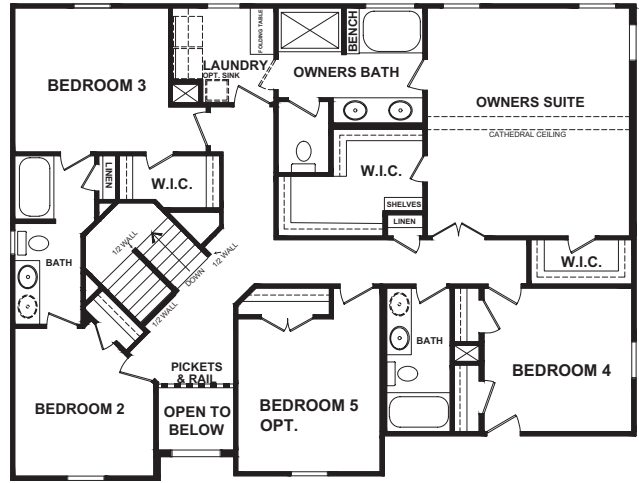
REV 1.26.2021

# THE CAPRI II

## FIRST FLOOR PLAN



## SECOND FLOOR PLAN



**NAPOLITANO HOMES**  
-EST. 1977-