

THE CAPRI II



CRAFTSMAN



TRADITIONAL



FARMHOUSE

FEATURES:

4 - 6 Bedrooms
3.5 - 4.5 Bathrooms
2,954 - 3,184 sq ft
Spacious Plan, Back
Porch, 3 Full Baths

SALES COUNSELOR: KELLY MORAN

757-240-8680 • NR@napolitanohomes.com

www.napolitanohomes.com/new-homes/suffolk/community/nr/

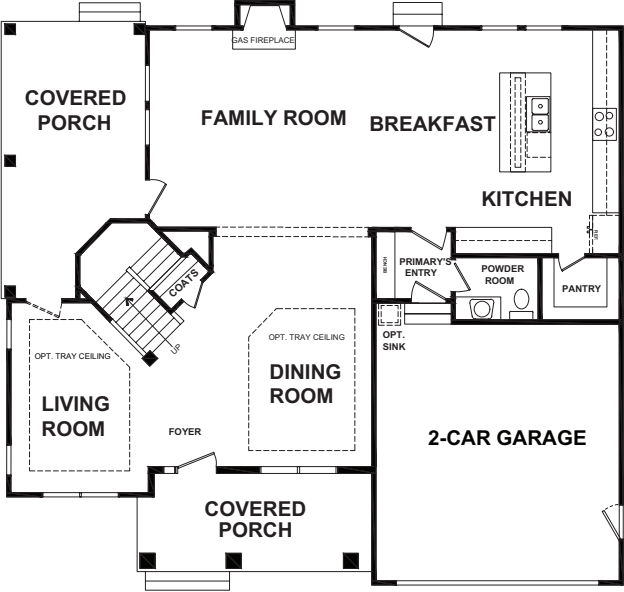
SALES OFFICE & MODEL HOME: 104 Secretariat Drive, Suffolk, VA 23435

© Napolitano Homes, All Rights Reserved. All prices, plans, elevations, features, specifications, and materials are subject to change without notice or obligation. Illustrations and floor plans are artist's renderings, not architectural blueprints. Options and extra-cost upgrades such as stone and brick may be shown and may vary by neighborhood. Please consult with your sales counselor prior to writing an offer.

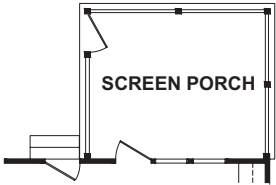
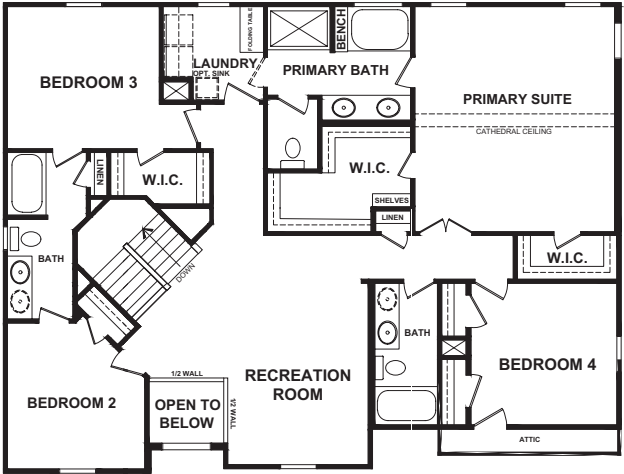


THE CAPRI II

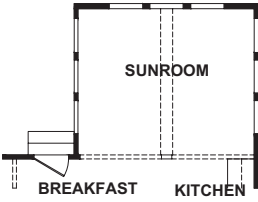
FIRST FLOOR PLAN



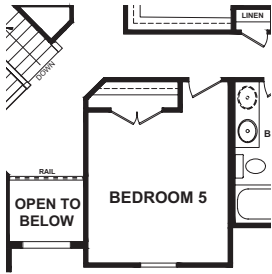
SECOND FLOOR PLAN



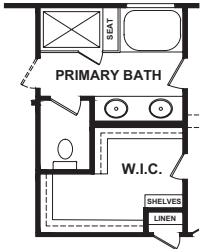
SCREEN PORCH OPTION 2



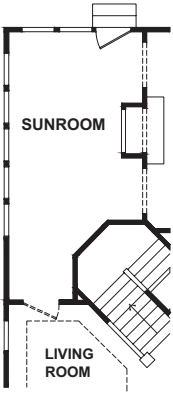
SUN ROOM OPTION 2



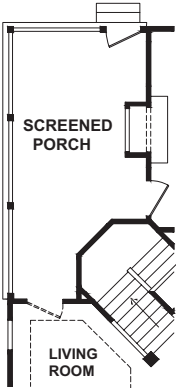
OPTIONAL BEDROOM 5



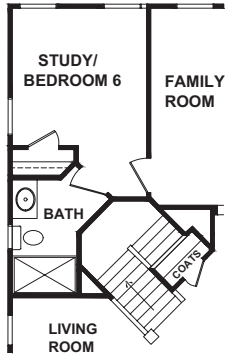
PRIMARY BATH OPTION



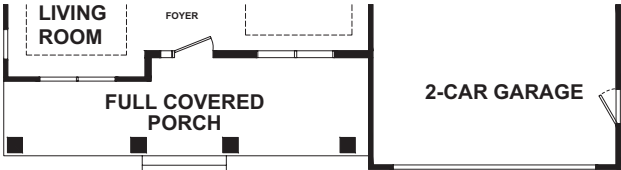
SUNROOM OPTION 1 AND 2 SIDED FIREPLACE OPT.



SCREENED PORCH OPTION 1 AND 2-SIDED FIREPLACE OPT.



STUDY/ B.R. 6 OPTION



FULL COVERED PORCH OPT.



NAPOLITANO HOMES

-EST. 1977-

*All floorplans based on Traditional Elevation