

THE NOVARO



FEATURES:

4-5 Bedrooms
2.5-3 Bathrooms
2,020 - 2,358 sq ft
Efficient open concept

SALES COUNSELOR: KELLY MORAN

757-240-8680 • NR@napolitanohomes.com

www.napolitanohomes.com/new-homes/suffolk/community/nr/

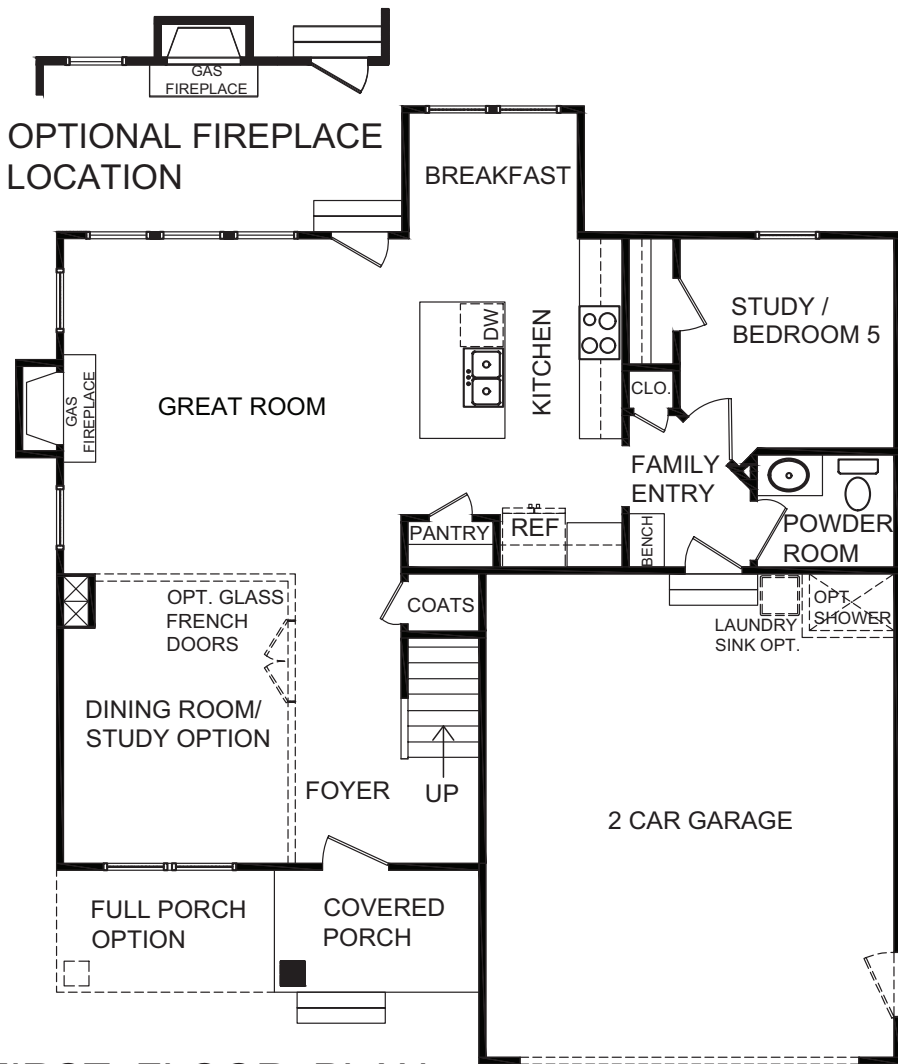
SALES OFFICE: 1012 White Heron's Lane, Suffolk, VA 23435

MODEL HOME: 104 Secretariat Drive, Suffolk, VA 23435

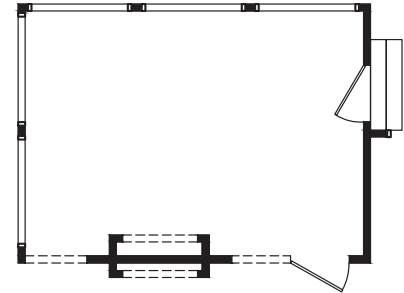
© Napolitano Homes, All Rights Reserved. All prices, plans, elevations, features, specifications, and materials are subject to change without notice or obligation. Illustrations and floor plans are artist's renderings, not architectural blueprints. Options and extra-cost upgrades such as stone and brick may be shown and may vary by neighborhood. Please consult with your sales counselor prior to writing an offer.



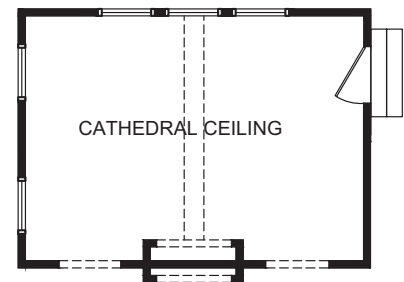
NOVARO



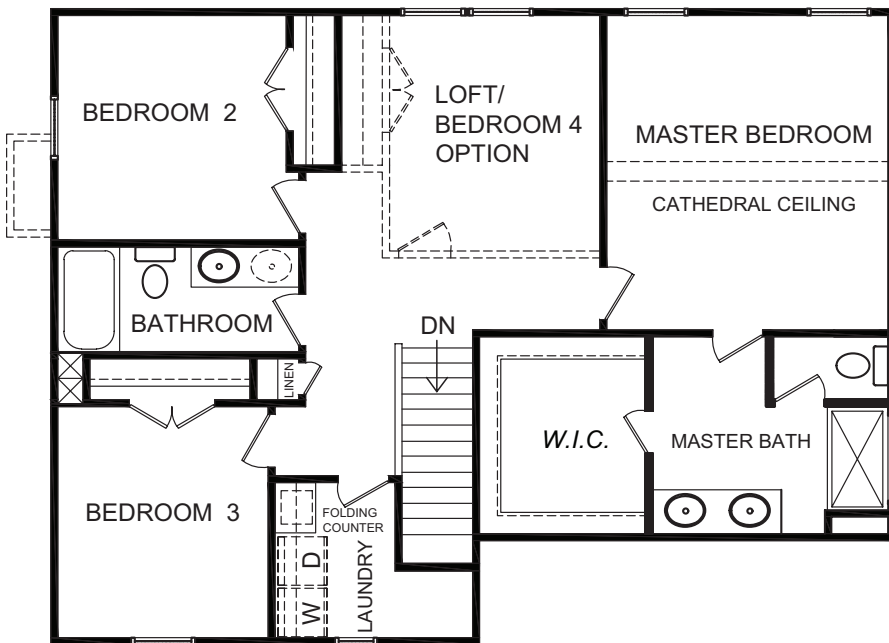
FIRST FLOOR PLAN



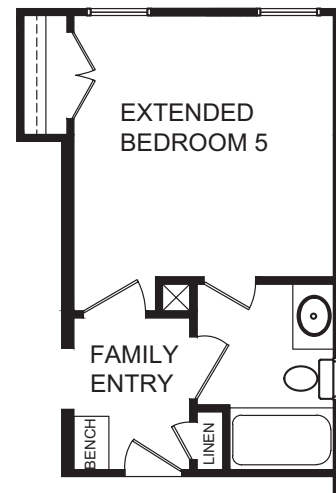
SCREEN PORCH OPTION
W/ OPT. INDOOR OUTDOOR
FIREPLACE



SUN ROOM OPTION W/
2 SIDED FIREPLACE OPTION



SECOND FLOOR PLAN



EXTENDED
BEDROOM 5
W/ FULL BATH
OPTION