

THE POSITANO



CRAFTSMAN



TRADITIONAL



FARMHOUSE

FEATURES:

Efficient Open Concept
4 - 5 Bedrooms
2.5 Bathrooms
2,312 - 2,518 square feet

SALES COUNSELOR: KELLY MORAN

757-240-8680 • NR@napolitanohomes.com
www.napolitanohomes.com/new-homes/suffolk/community/nr/

SALES OFFICE: 1012 White Heron's Lane, Suffolk, VA 23435

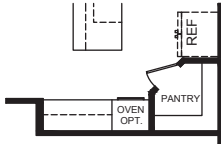
MODEL HOME: 104 Secretariat Drive, Suffolk, VA 23435

REV 8.15.2020

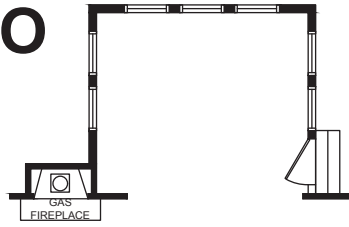
Exclusive Agent Representing the Seller. All information is believed to be accurate but is not warranted and is solely a guide to prospective purchasers who should satisfy themselves by inspection or otherwise as to the correctness of this information. © 2020 BHH Affiliates, LLC. An independently owned and operated franchisee of BHH Affiliates, LLC. Berkshire Hathaway HomeServices and the Berkshire Hathaway HomeServices symbol are registered service marks of HomeServices of America, Inc. ® Equal Housing Opportunity. Berkshire Hathaway HomeServices Towne Realty is an affiliate of TowneBank. © Napolitano Homes, All Rights Reserved. All prices, plans, elevations, features, specifications, and materials are subject to change without notice or obligation. Illustrations and floor plans are artist's renderings, not architectural blueprints. Options and extra-cost upgrades such as stone and brick may be shown and may vary by neighborhood. Please consult with your sales counselor prior to writing an offer.



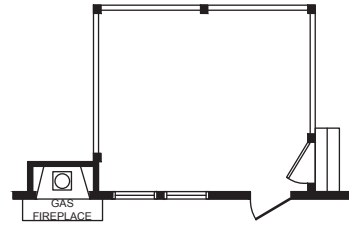
POSITANO



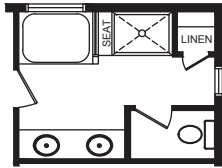
KITCHEN OPTION



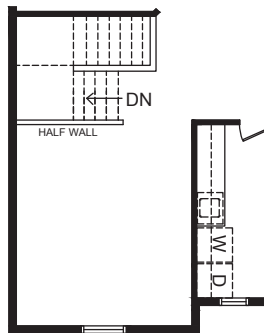
SUNROOM OPTION



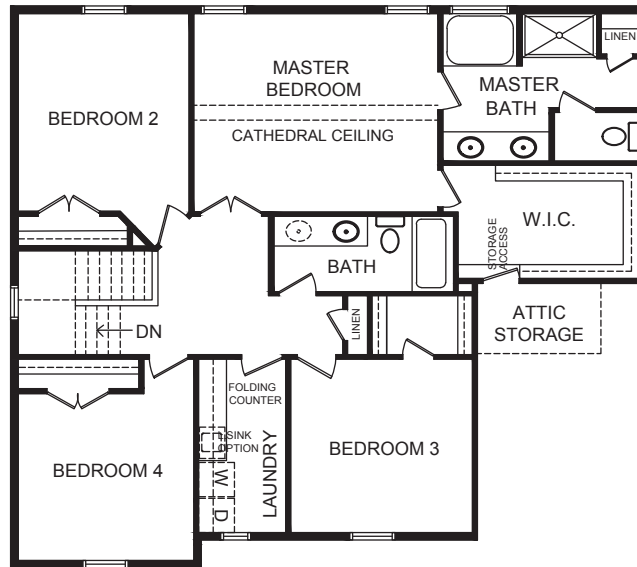
SCREEN PORCH OPTION



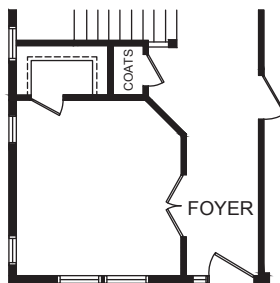
MASTER BATH OPTION
WITH CERAMIC TILE SHOWER
AND GLASS PARTITION



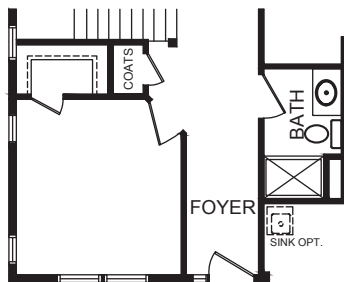
MEDIA ROOM OPTION



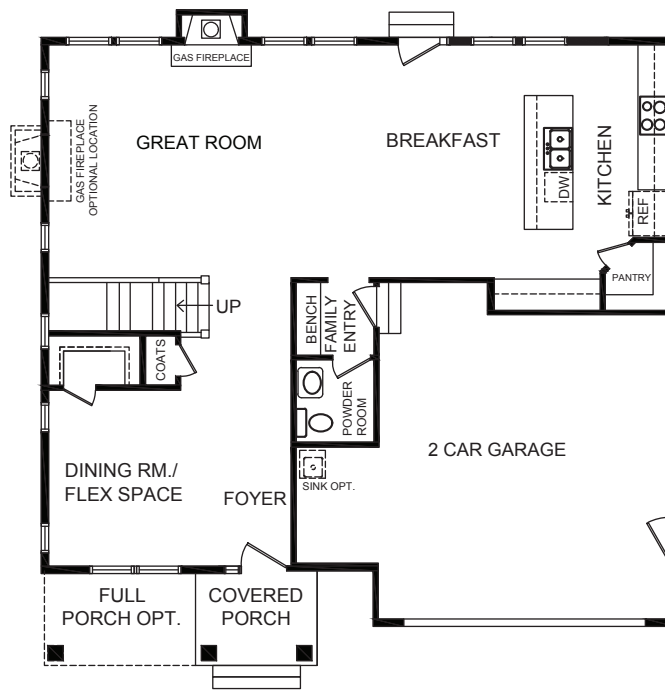
SECOND FLOOR PLAN



STUDY OPTION



B.R. 5 DOWN OPTION



FIRST FLOOR PLAN

*All floorplans based on Traditional Elevation



NAPOLITANO HOMES
~EST. 1977~



BERKSHIRE HATHAWAY | Towne Realty
HomeServices