

THE WATERFORD



TRANSITIONAL



TRADITIONAL



CRAFTSMAN

FEATURES:

- Soaring Ceilings, Private Study
- 4 - 6 Bedrooms
- 2.5 - 4 Bathrooms
- 2,738 - 3,352 square feet

SALES COUNSELOR: KELLY MORAN

757-240-8680 • NR@napolitanohomes.com

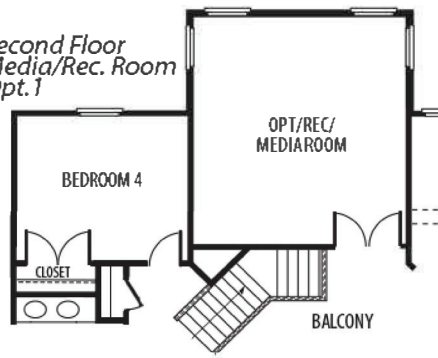
www.napolitanohomes.com/new-homes/suffolk/community/nr/

SALES OFFICE: 1012 White Heron's Lane, Suffolk, VA 23435

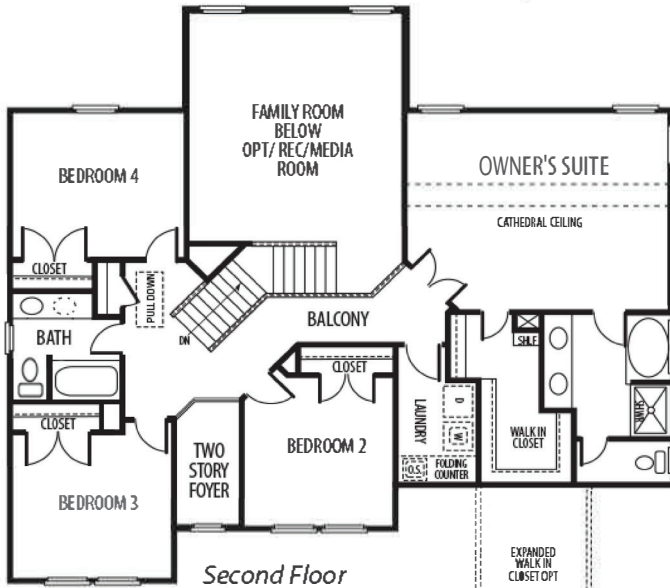
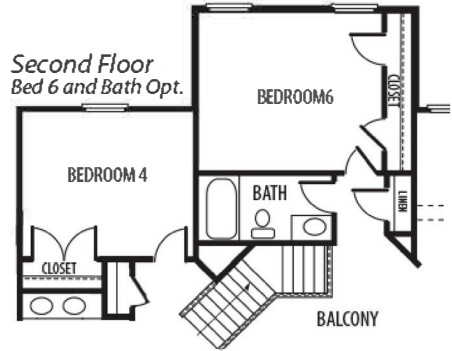
MODEL HOME: 104 Secretariat Drive, Suffolk, VA 23435

THE WATERFORD

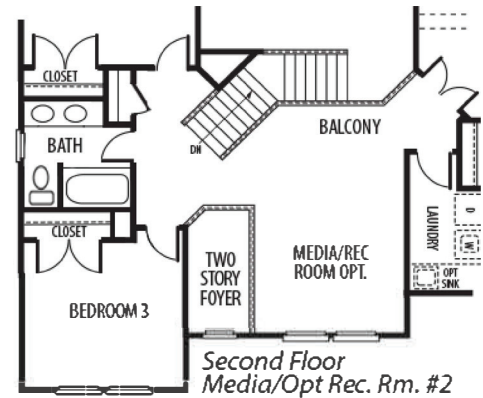
Second Floor
Media/Rec. Room
Opt. 1



Second Floor
Bed 6 and Bath Opt.

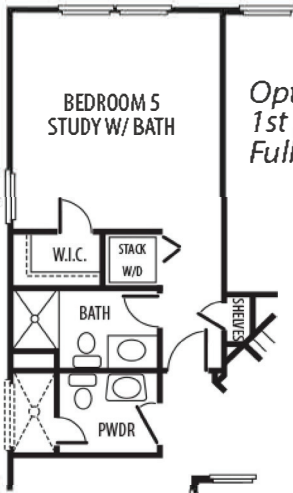


Second Floor

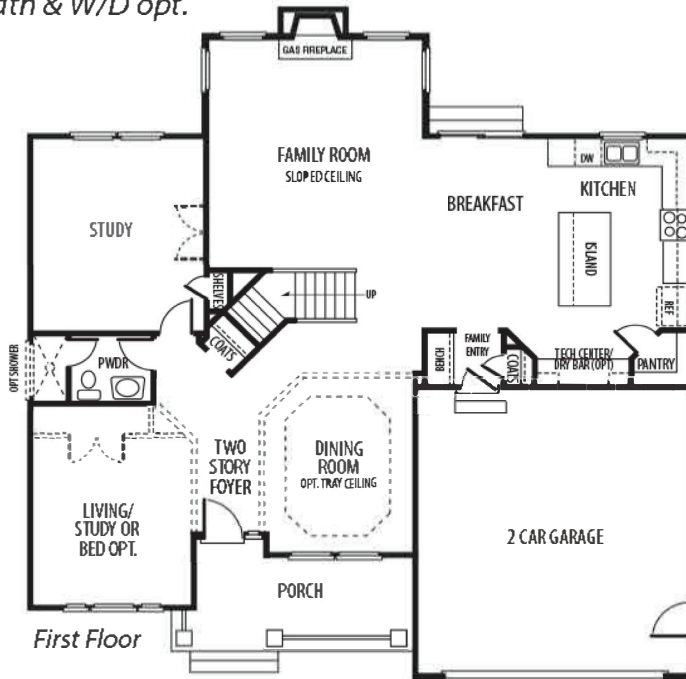
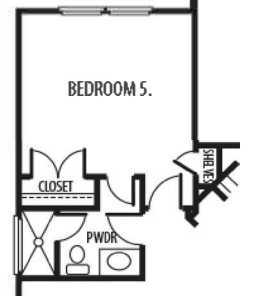


Second Floor
Media/Opt Rec. Rm. #2

Opt. Extended
1st Floor BR 5/Study w/
Full Bath & W/D opt.

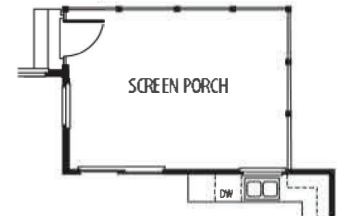


Opt. Bedroom 5

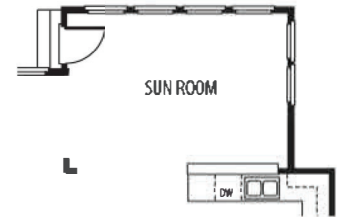


First Floor

Opt. Screen Porch



Opt. Sun Room



*All floorplans based on Traditional Elevation



NAPOLITANO HOMES
-EST. 1977-



BERKSHIRE HATHAWAY | Towne Realty
HomeServices