

Community and Amenities



Suffolk's Newest Active Adult Oasis!

Introducing Napolitano Homes' newest 55+ Active Adult single story condominium community located on Pruden Blvd minutes from historic downtown Suffolk and Lake Meade. The Vineyards at Hallstead Reserve's beautiful single-story condominiums are designed with a low maintenance lifestyle in mind.

Enjoy living in a beautiful countryside setting with the convenience of grocery stores, pharmacies, shops and local restaurants close by, as well as Suffolk's business center, medical corridor and Sentara Obici Hospital. Hallstead Reserve's location just off Route 58 makes for a quick commute to other Hampton Roads locations such as Downtown Norfolk or the Peninsula, home to additional shopping, dining, entertainment and military bases.

This community has the best of everything; enjoy the included amenities featuring a modern club house with a full fitness center, refreshment area, pool, pickleball court, fire pit, walking paths, dog park and so much more.

Come see why The Vineyards at Hallstead Reserve is the ideal place to call home!

Kelly Moran, REALTOR®

757.240.8680

hallsteadreserve@napolitanohomes.com

www.NapolitanoHomes.com/hallsteadreserve

1701 Acadian Drive
Suffolk, Virginia 23434



BERKSHIRE HATHAWAY
HomeServices

Towne Realty | 757-481-8400

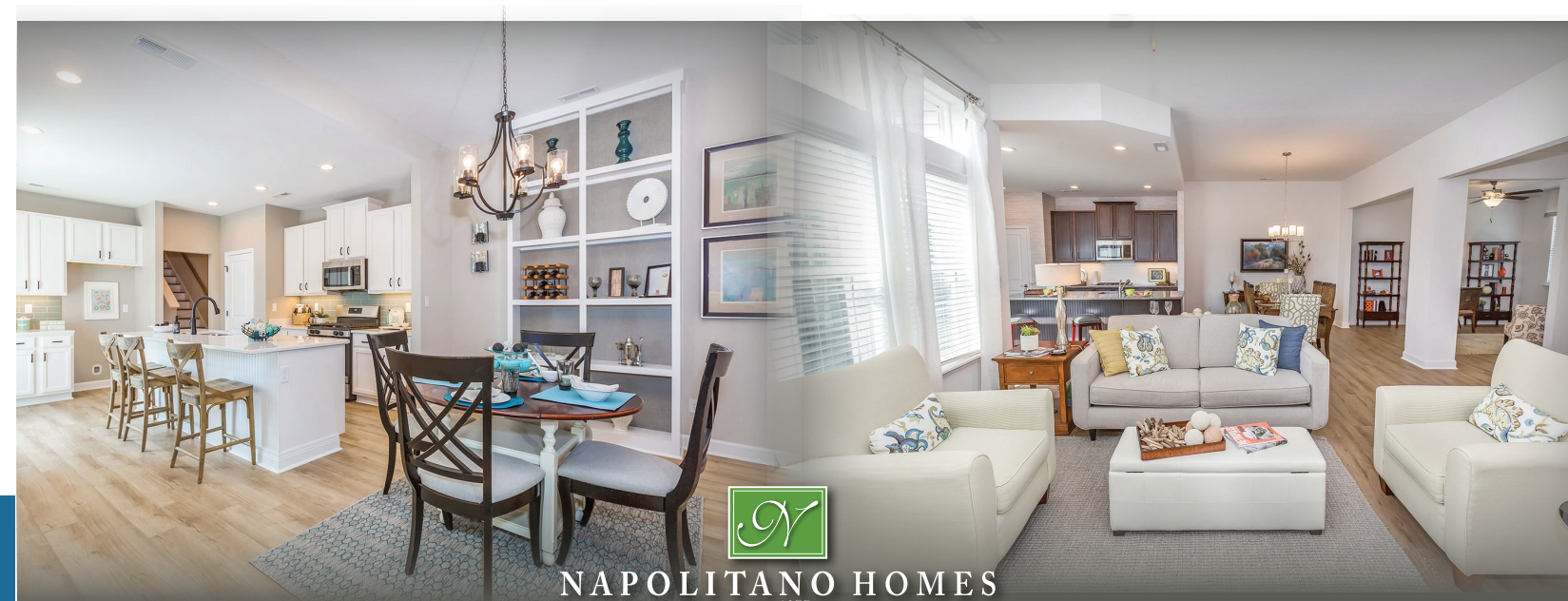
All plans, elevations, features, specifications, and materials are subject to change without notice or obligation. Illustrations and floor plans are artist's renderings, not architectural blueprints. Options and extra-cost upgrades may be shown and may vary by community or model. Please consult with your sales agent prior to writing an offer.



Live *Your* Best Life!

THE VINEYARDS
AT

Hallstead Reserve



NAPOLITANO HOMES
EST. 1977

THE VINEYARDSTM

AT

Hallstead Reserve

HOMES DESIGNED WITH YOU IN MIND.

Introducing Napolitano Homes' newest 55+ Active Adult single story condominium community located just minutes from historic downtown Suffolk on Pruden Boulevard near Lake Meade. These beautiful single story condominium homes are designed with your lifestyle in mind.

The Veneto

2/3 BR • 2/3 BA • 1,520 - 2,026 SF



Open. Spacious. Perfectly Designed. By incorporating soaring ceilings throughout the dining and great rooms, the Veneto is designed to take advantage of natural lighting throughout its incredibly open concept design. The fluid transitions between living spaces and panoramic views of the entire home make the Veneto a deceptively spacious home.

The Lombardy

3/4 BR • 2/3 BA • 1,642 - 2,168 SF



Cozy. Efficient. Functional. A home designed around a central courtyard, the Lombardy is bathed in natural light throughout. High ceilings enhance the spaciousness while maintaining a cozy feel when you walk through your front door.

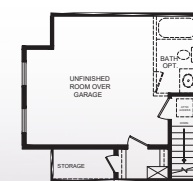
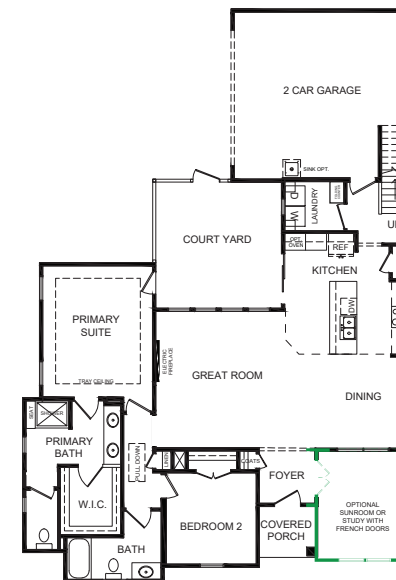
The Tuscany

3/4 BR • 2/3 BA • 1,834 - 2,374 SF



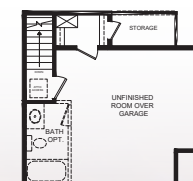
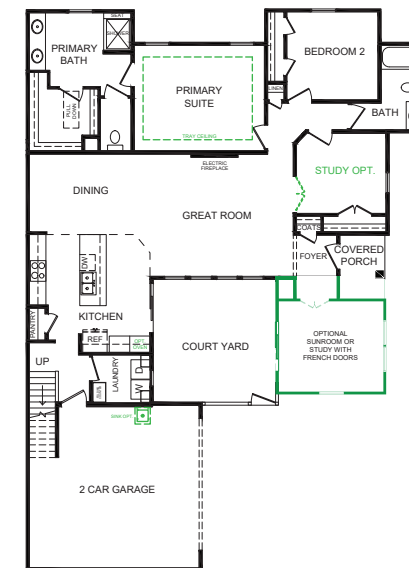
Roomy. Welcoming. An Entertainer's Dream. The Tuscany immediately embraces you upon walking through the front door with a spacious and open living area. The large central kitchen island is the heart of the home when having family over or entertaining with close friends.

The Veneto



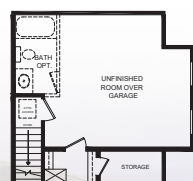
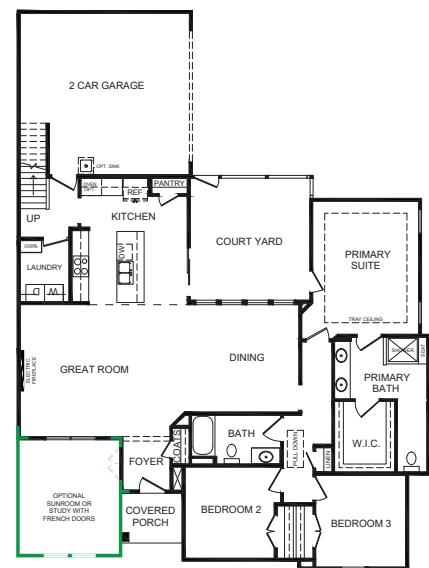
SECOND FLOOR PLAN
ROOM OVER GARAGE

The Lombardy



SECOND FLOOR PLAN
ROOM OVER GARAGE

The Tuscany



SECOND FLOOR PLAN
ROOM OVER GARAGE

When you choose Napolitano Homes for your new home,

you're choosing a local, family-oriented building team that has a deep-rooted dedication to improving the overall quality of life in the region.

DO YOU
LOVE
WHERE YOU
LIVE?