

PORTOFINO

TWO STORY TOWNHOME FEATURES

1,530 SF

3 Bedrooms | 2.5 Baths | 1 Car Garage



757-718-6322

arraybcq@napolitanohomes.com

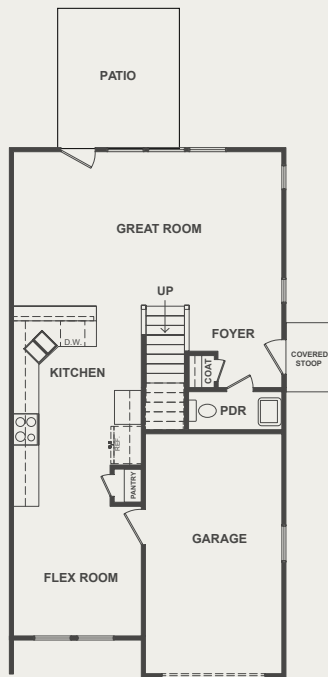
The **Portofino** offers a well-designed, flowing living space. This end-unit model has a side entrance leading to a spacious great room and a large kitchen with ample counter space. There's also a flex room with plenty of natural light, suitable for a breakfast area or home office. The primary suite is impressive, with a spa-like bath and two roomy closets. Upstairs, there's a laundry room, and the two secondary bedrooms can be transformed into a comfortable secondary suite with a sitting area, its own walk-in closet, and bath. A spacious garage and a private patio complete this unique home.

EXTERIOR

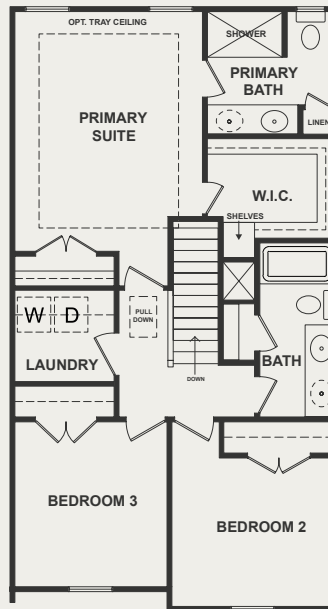


► napolitanohomes.com/new-homes/suffolk/community/array/

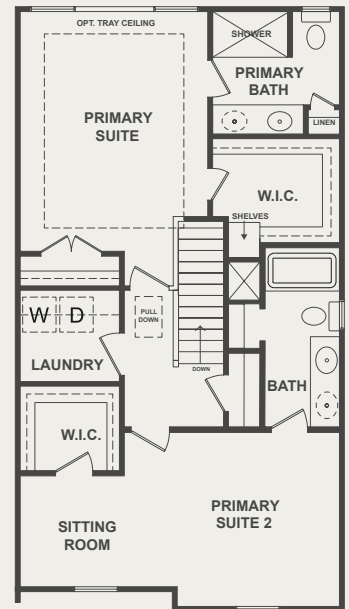
FIRST FLOOR



SECOND FLOOR



SECOND FLOOR W/ DUAL PRIMARY SUITES



**BERKSHIRE
HATHAWAY**
HOMESERVICES

RW TOWNE
REALTY


NAPOLITANO HOMES
-EST 1977-

