

GENOA

THREE STORY TOWNHOME FEATURES

2,068 SF

3 Bedrooms | 2.5 or 2.5 + .5 Baths | 2 Car Garage



Sales Consultant: Tara Strauser

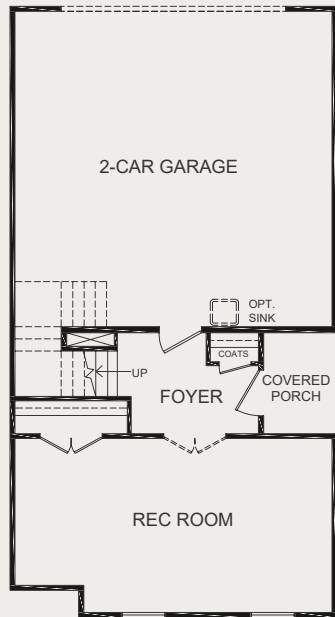
757-718-6322

arraybcq@napolitanohomes.com

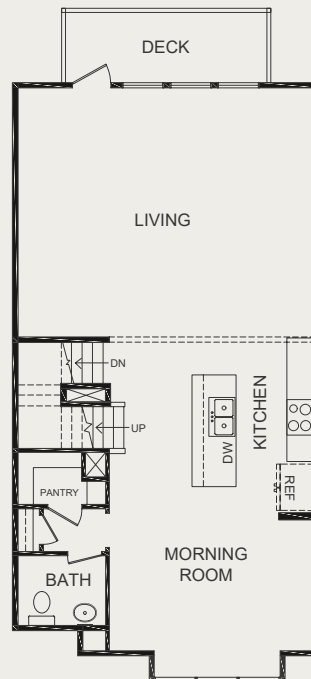
The Genoa is a spacious end-unit home. It comes with three bedrooms and two and a half bathrooms but can be customized to have two Primary Suites with two full bathrooms and two half bathrooms. The lower level has a recreation area that can be personalized with French doors and a half bath. The main floor features an open concept design with a large living room leading to a deck. The kitchen has a sizable island, and the morning room's bay window adds to the sense of space.

▶ napolitanohomes.com/new-homes/suffolk/community/array/

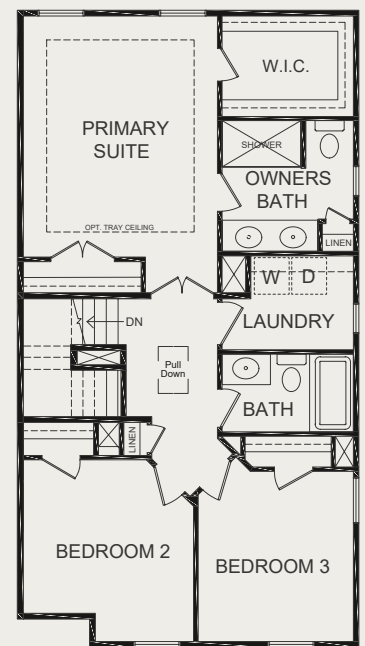
GROUND FLOOR



MAIN FLOOR



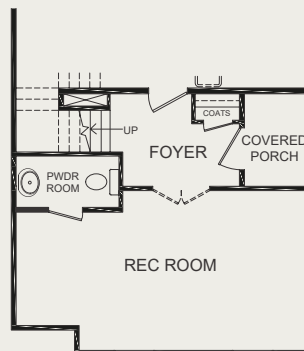
UPPER FLOOR



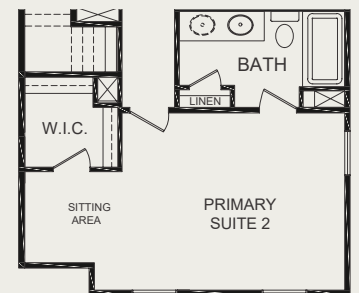
INTERIOR



REC W/ BATH OPTION



DUAL PRIMARY SUITES



**BERKSHIRE
HATHAWAY**
HOMESERVICES

RW TOWNE
REALTY


NAPOLITANO HOMES
-EST 1977-



INCLUDED FEATURES for the Genoa Model

| | | |
|--------------------|---|--|
| THE PERSONAL TOUCH | <ul style="list-style-type: none"> • Every Napolitano Home comes with the opportunity to select from a list of special upgrades and options allowing you to further personalize your home to fit your lifestyle. • Home Buyer Seminar- Part of delivering the best new home buying experience is making sure our buyers have all the information they need to make the process as smooth as possible. • Our Personal Site Builder Program schedules meetings with your Personal Site Builder during the construction process and includes Pre-Construction and Framing Conference • Buyer Orientation-Day of closing with your Personal Site Builder to familiarize yourself with your new home. | |
| INVITING EXTERIORS | <ul style="list-style-type: none"> • Picturesque street trees and planting throughout the community • Concrete Slab Foundation • Designer-selected exterior Color Packages • Low-maintenance exterior with premium vinyl siding and stone accents (per plan) • Metal Wrapped Cornice-Vinyl Soffits • 30-year Architectural roof shingles • Seamless aluminum gutters and downspouts (per plan) • Fiberglass front entry door • Decorative satin stainless handle set on front entry door • Security deadbolt on front and rear doors • Hose connection at garage • Three weatherproof receptacles (front door, garage and deck) • Insulated decorative raised panel metal garage doors with glass • Professionally landscaped with shrub package and sodded common area • Termite treatment - Bore Care System • Hurricane fasteners on each rafter • Underground utilities • Mailbox Cluster | <ul style="list-style-type: none"> • Floor plans designed with everyday living in mind • Spacious interiors with 8' ceilings on ground level and 9' on main and upper levels. • LVP flooring in the foyer • Choice of plush carpet with quality pad • No-wax vinyl floor in all Bathrooms, Kitchen, and Laundry • Custom textured walls and ceilings (except kitchen and baths) • Choice of designer-selected interior paint color packages • Choice of 3 raised panel door styles • Satin Stainless finish interior door hardware • Designer-selected light fixture packages in your choice of Brushed Nickel or Matte Black finish • Rocker switches throughout home • Custom-designed closets and pantry with ventilated shelving • Fully hung, finished, and painted 2-car garage walls & ceiling • Pre-wired for garage door opener • Laundry with connections for full-size washer and dryer • Pre-wired for ceiling fan in Family Room, Primary and Secondary Bedrooms, Ground Level Study/Rec Room • Primary Suite includes walk-in and secondary closets • Ground fault interrupter circuits for Kitchen, Bathrooms, Garage, and exterior outlets • Dual internet feeds for additional providers • Advanced home structured wiring package includes HDMI outlet in Living Room, Advanced outlet (multi port) in Kitchen, Cable/Data in Bedrooms (per plan). • USB stacked outlet in Bedrooms and Kitchen • Direct-wire smoke detectors and carbon monoxide detector • Home automation module |
| INSPIRING KITCHENS | <ul style="list-style-type: none"> • Oversized island with ample space for seating • Spacious Pantry • Custom-designed birch Kitchen cabinets in a choice of finish with 42" wall cabinets with adjustable shelves and crown molding around Bump-up • Choice of level 1 granite countertops • Choice of 3 under-mount stainless steel sinks with single handle pull down chrome faucet sprayer • Recessed lighting • Ice Maker hookup • Stainless Steel appliances including smooth top electric range, built-in microwave with non-vented hood, dishwasher, and disposal | <ul style="list-style-type: none"> • Energy-efficient tankless gas hot water heater • Energy efficient gas heat and 15 Seer HVAC system • Digital programmable thermostat • Energy-efficient vinyl Low-E windows with tilt sash and screen • All windows, doors, and penetrations sealed and caulked • House wrap infiltration barrier • Fully weather-stripped insulated exterior doors • R-49 blown insulation in flat ceilings • R-15 batt insulation in exterior walls • Energy Sense Home |
| BATHS | <ul style="list-style-type: none"> • Luxurious Primary Bath with double bowl adult height vanity, fiberglass shower, vinyl floor, cultured marble counter top • Elongated toilets in all baths • Easy clean fiberglass tub / shower in secondary bath(s) • Adult height single vanity with cultured marble countertop in secondary baths • Delta chrome plumbing fixtures. | <ul style="list-style-type: none"> • Community clubhouse with fitness center, pool and fire pit • Community playground • Community dog park • Community walking trails • Community pocket parks |
| | | <ul style="list-style-type: none"> • Our Family Building Homes for Your Family since 1977 • Nationally known 2-10 Home Buyer Warranty • Full In-House Warranty and Customer Service Department • 12 week Post-Closing Inspection • 11 Month Post-Closing Inspection |