

AMALFI II

FEATURES

1,618 -1,762 SF

3 Bedrooms | 2.5 Baths | 2 Car Garage



Sales Consultant: Diana Jordan

757-992-8809

vistas@napolitanohomes.com

THE AMALFI is crafted to make the most out of every square foot this beautiful home has to offer. The Great Room, Breakfast Area and Kitchen are designed to be spacious and efficient. Numerous windows at the side and rear of the homes along with sliding porch doors bathe the first floor in natural light. Two spacious secondary bedrooms and a roomy Primary Suite make this home a great option for any family.

NOUVEAU

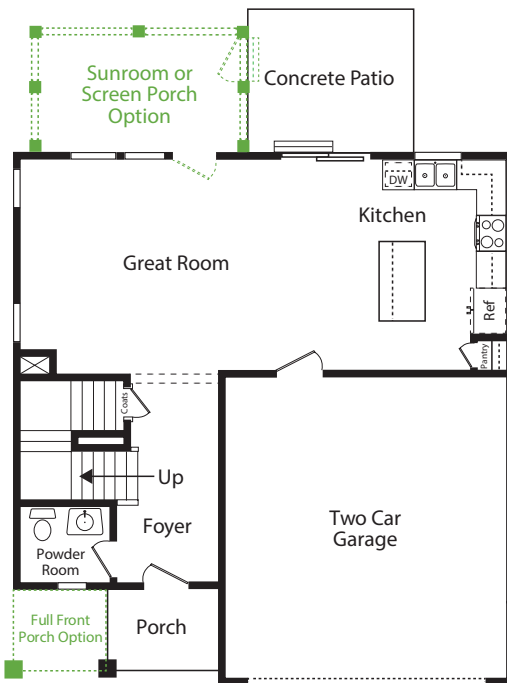


REGAL

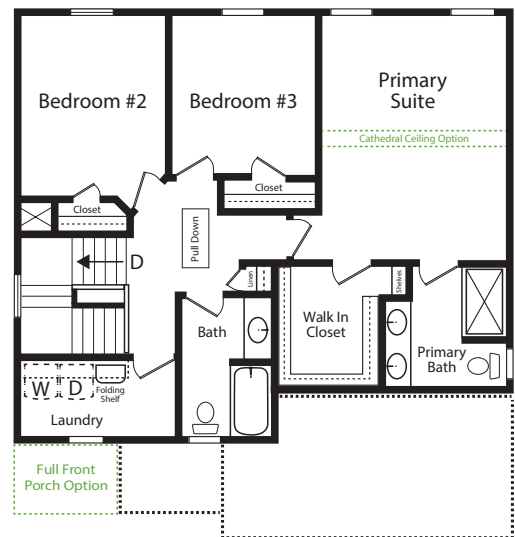


▶ napolitanohomes.com/new-homes//community/the-vistas

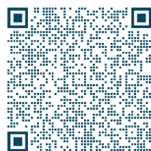
FIRST FLOOR



SECOND FLOOR



Green Dotted Lines and Text = Options with Additional Cost



theVistas
at Bennett's Creek Quarter


NAPOLITANO HOMES
-EST 1977-



MONDOVI II

FEATURES

1,825 - 1,965 SF

3-4 Bedrooms | 2.5 Baths | 2 Car Garage



Sales Consultant: **Diana Jordan**

757-992-8809

vistas@napolitanohomes.com

THE MONDOVI makes an excellent first impression by creating a bright and spacious feel upon entering the home from either the front door or the family entry via the garage. Upstairs, whether utilizing the standard loft or converting it to a fourth bedroom, this home is designed to grow with you over time with its efficient use of living space.

NOUVEAU

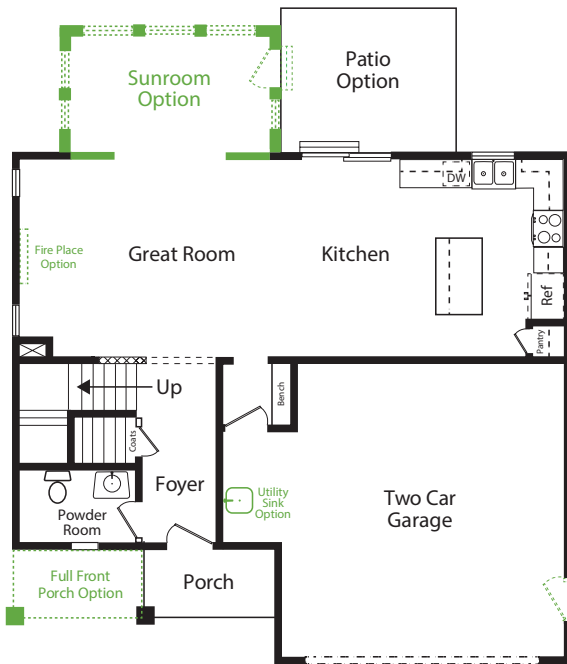


REGAL

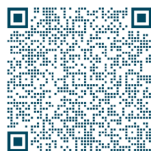
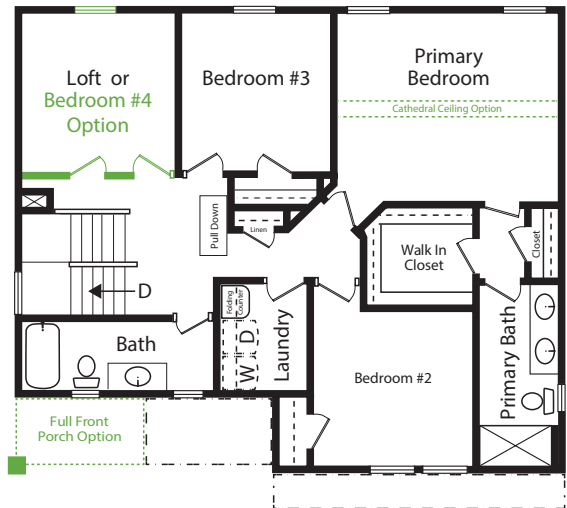


▶ napolitanohomes.com/new-homes//community/the-vistas

FIRST FLOOR



SECOND FLOOR



theVistas
at Bennett's Creek Quarter


NAPOLITANO HOMES
-EST 1977-

