

# SPINNAKER II

## FEATURES

2,176 -2,806 SF

3-5 Bedrooms | 2.5 - 3 Baths | 2 Car Garage



**Sales Consultant: Diana Jordan**

**757-284-1845**

djordan@eastwoodhomes.com

Experience the ultimate in versatility with the **SPINNAKER II** floor plan, a standout in the Vistas community. This thoughtfully designed home features a primary bedroom with a full bath on the first floor, perfect for families seeking flexibility and convenience. With 3-5 spacious bedrooms, 2.5-3 luxurious bathrooms, and a 2-car garage, the Spinnaker II offers ample storage and adaptable living spaces to meet your unique needs.

NOUVEAU | STANDARD PORCH

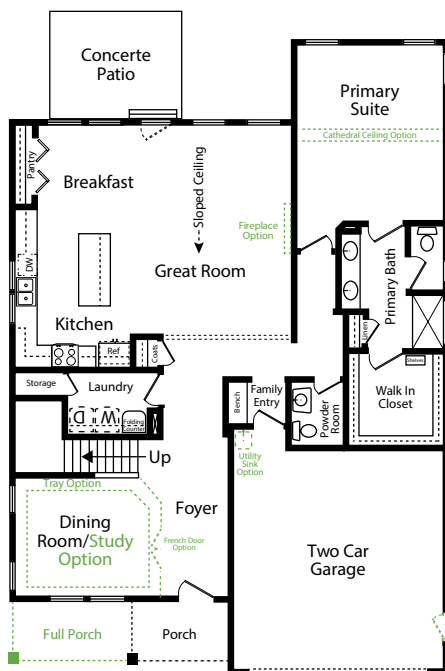


REGAL | STANDARD PORCH

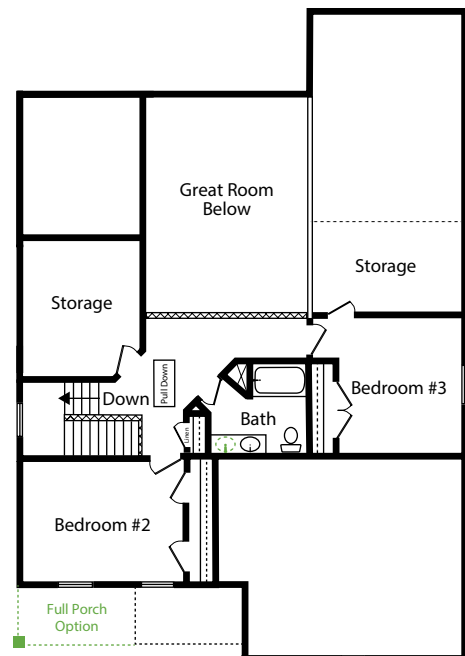


► [napolitanohomes.com/new-homes/suffolk/community/the-vistas/](http://napolitanohomes.com/new-homes/suffolk/community/the-vistas/)

FIRST FLOOR



SECOND FLOOR



Green Dotted Lines and Text = Options with Additional Cost



*theVistas*  
at Bennett's Creek Quarter

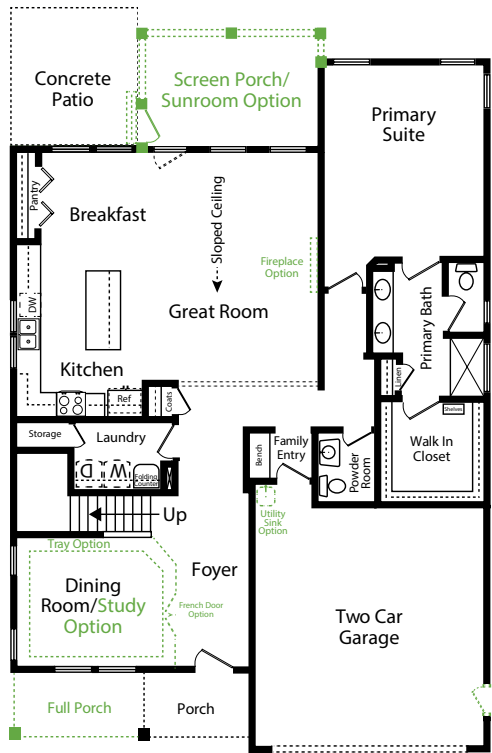
  
**NAPOLITANO HOMES**  
• AN EASTWOOD HOMES COMPANY •



## Make the Spinnaker II floor plan your own by personalizing it with one or more of these available

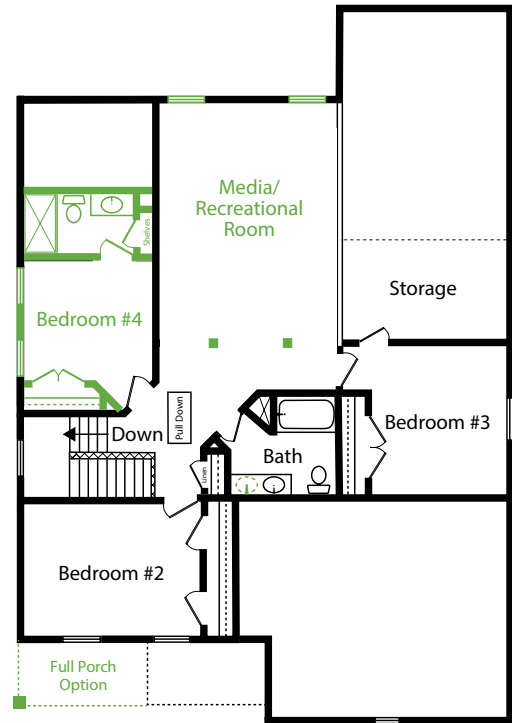
**options:** Full Front Porch; Sunroom; Screen Porch; Fireplace; Tray Ceiling in the Dining Room; French Doors for Dining Room/Study; Utility Sink in the Garage; Garage Side Door; Cathedral Ceiling in the Primary Bedroom; Media/Recreational Room; Bedroom #4 with Full Bath; Bedroom #5 with Full Bath.

### FIRST FLOOR | SCREEN PORCH / SUNROOM OPTION



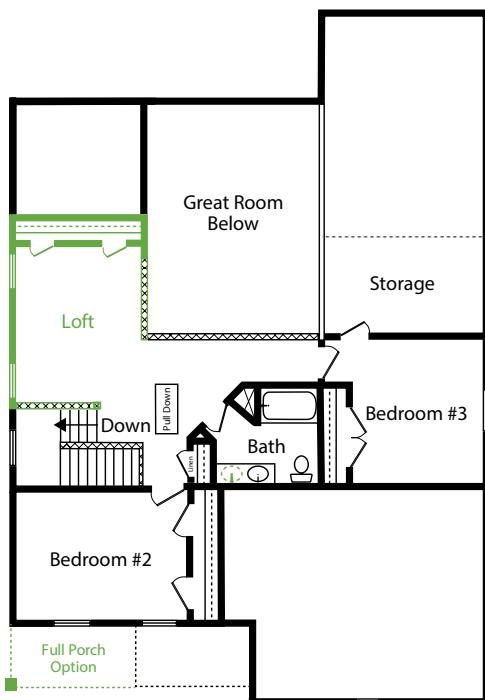
Shown as a Screen Porch Option

### SECOND FLOOR | BEDROOM #4, FULL BATH & MEDIA / RECREATIONAL ROOM

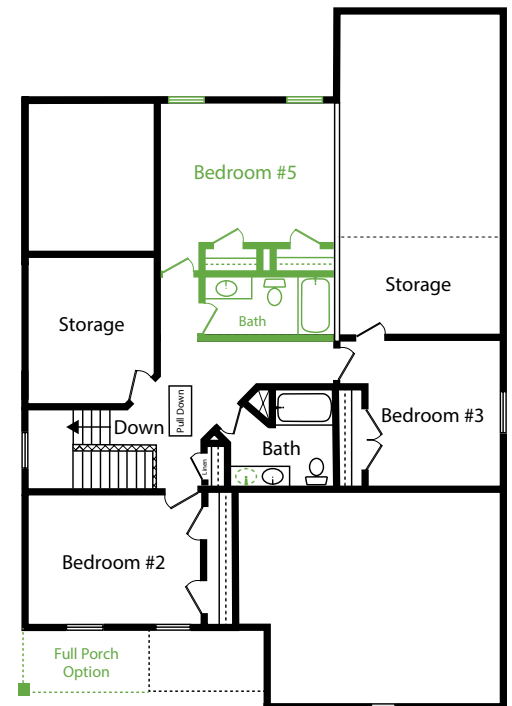


Bedroom #4 Option Available With or Without a Full Bath

### SECOND FLOOR | LOFT



### SECOND FLOOR | BEDROOM #5 & FULL BATH



Bedroom #5 Option Available With or Without a Full Bath

Green Dotted Lines and Text = Options with Additional Cost